



2025

ARCHERY PRODUCT
CATALOG



Lisa BARBELIN (FRANCE)

WINNING ACTION WINNING SPIRIT

WIAWIS stands for "Winning Action, Winning Spirit". It represents the unwavering action and spirit for victory. As a name well suited to the philosophy of WIN&WIN, WIAWIS products are high-end archery bows and they are our representative products of WIN&WIN.

WIAWIS

OUR PHILOSOPHY

: The Power of Quality Distinction

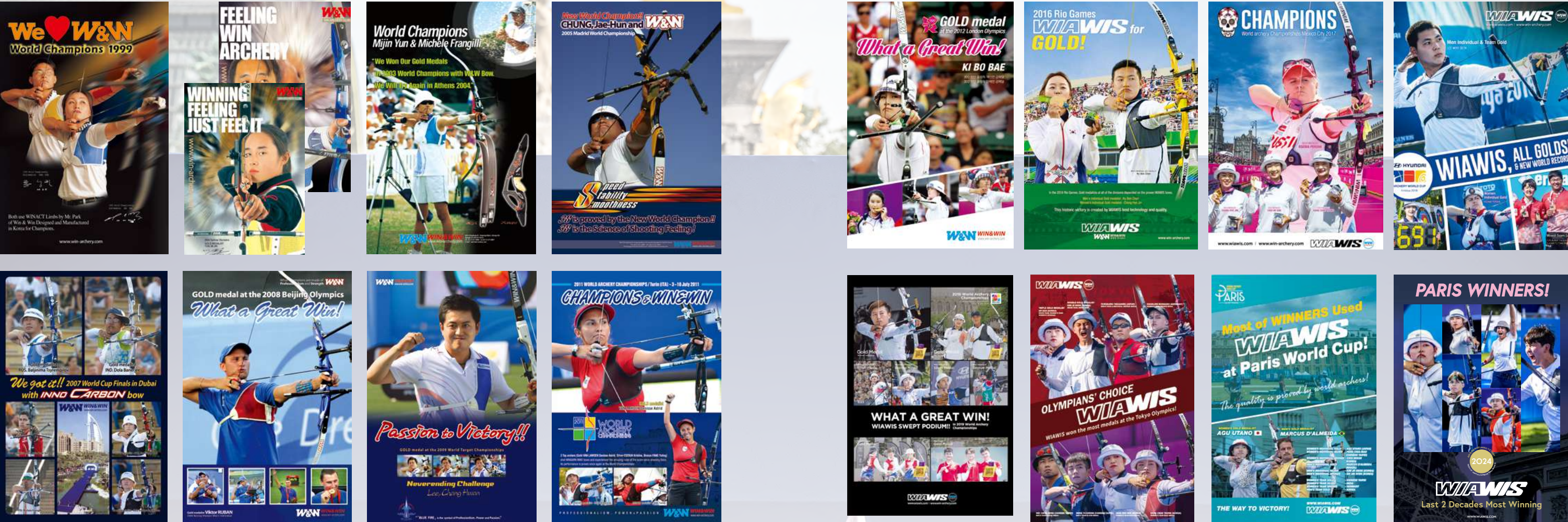
The story of Win&Win Archery is the story of professional archers who gambled everything to follow their passion. In 1993, WIN&WIN Co. was established by Mr. Park Kyung Rae and the people who used to be in national archery team. Prior to that, the Korean Archery National Team was seated among the middle world archery ranks in the early 1980s. Mr. Park worked to bring the Korean Archery Team to where it is today; the best archery program in the world. He led Korea to success with their first gold medal at the World Championships in 1985 and with the gold medals at the Olympic in 1988 and at the World Championships in 1991.

Based on its expertise in archery, WIN&WIN has devoted its passion and efforts to make the best bows in the world by actively investing in advanced technology. In 2002, Yamaha archery technology and equipment were introduced to further enhance its technology and know-how. Thus, WIN&WIN has become the top brand in the world as a majority of the athletes from the Olympics and the World Championships are using the WIAWIS Bow from Win-Win. At the Rio Olympic Games in 2016, WIAWIS Bow achieved a gold medal in all categories.



HISTORY OF VICTORY

WIAWIS won the gold medal at the 1999 World Championships.
With the best players in the world so far. It is loved by the bow that won the medal.



1999
World Archery Championships
Men's Individual (Hong Sung-Chil)
Women's Individual (Lee Eun-Kyung)

2007
Archery World Cup
(Baljинима Tsyrempilov, Dola Banerjee)

2012
London Olympics
Women's Individual, Team Gold
(Ki Bo-Bae)

2000
Sydney Olympics
Men's teams Gold (Oh Kyo-Mun)
* New World Recorder (1,379 pts)
Women's Individual, Team Gold
(Yun Mi-Jin)

2008
Beijing Olympics
Men's Individual (Viktor Ruban)

2013
World Archery Championships
Men's Individual Gold (Lee Seung-Yoon)

2003
World Archery Championships
Men's Individual (Michele Frangilli),
Women's Individual (Yun Mi-Jin)

2009
World Archery Championships
Men's Individual (Lee Chang-hwan)

2015
World Archery Championships
Women's Individual (Ki Bo-Bae)

2005
World Archery Championships
Men's Individual (Chung Jae-Hun)

2010
World Archery Championships
Women's Individual (Van Lamoen
Denisse Astrid)

2016
**Clean sweep of all Archery Gold
Medals at the Rio Olympics**
Men's & Women's individual
(Chang Hye-jin, Ku Bon-chan)

2017
World Archery Championships
Women's Individual (Ksenia Pervova)
Women's team (Chang Hye-jin, Choi
Mi-sun, Kang Chae-young)

2022
World Archery Championships
Women's Individual Gold, Silver, Bronze
/ Men's Individual Gold / Women's
Team Gold / Men's Team Gold
/ Mixed Team Gold

2018
**Clean sweep of all Gold Medals at
the Archery Worldcup**
Women's Individual Gold, Silver, Bronze
/ Men's Individual Gold / Women Team
Gold / Men Team Gold / Mix Team
GoldWomen's Individual, Team Gold
(Yun Mi-Jin)

2023
Archery World Cup
Women's Individual Gold, Silver, Bronze
/ Men's Individual Gold / Women's
Team Gold, Silver, Bronze / Men's Team
Gold, Silver, Bronze/ Mixed Team Gold,
Silver

2019
**Clean sweep of all Gold Medals at
the World Championships**
Women's Individual Gold, Silver, Bronze
/ Men's Individual Silver, Bronze /
Women's Team Gold / Men's Team Gold
/ Mixed Team Gold

2024
Paris Olympics
Half of participating athletes, 60% of
gold medalists use!
Women's Individual Gold, Silver, Bronze
/ Women's Team Gold, Silver / Men's
Team Gold, Silver / Mixed Team Gold

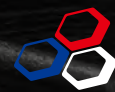
2021
2020 Tokyo Olympics
Women's Individual Gold, Silver, Bronze
/ Men's Individual Bronze / Women's
Team Gold, Bronze / Men's Team Gold,
Silver, Bronze / Mixed Team Gold

WIAWIS REVOLUTION TECHNOLOGY

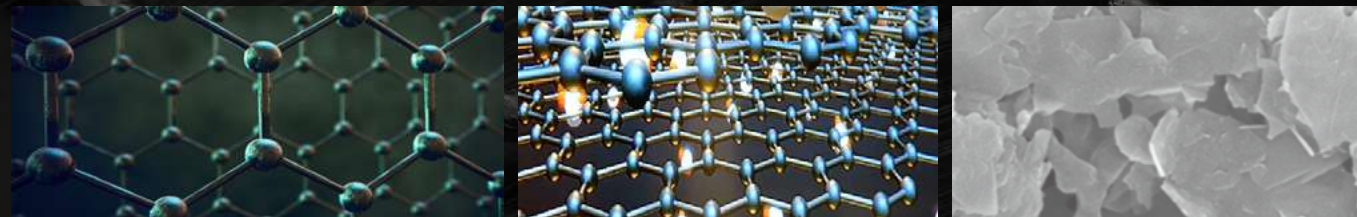
UNIQUE MATERIALS

The best high-tech materials are developed and used by WIAWIS as its won unique technology to optimize bow performance.

MAXIMIZING PROPERTIES OF CARBON WITH APPLYING A HIGH TECH NANO GRAPHENE.



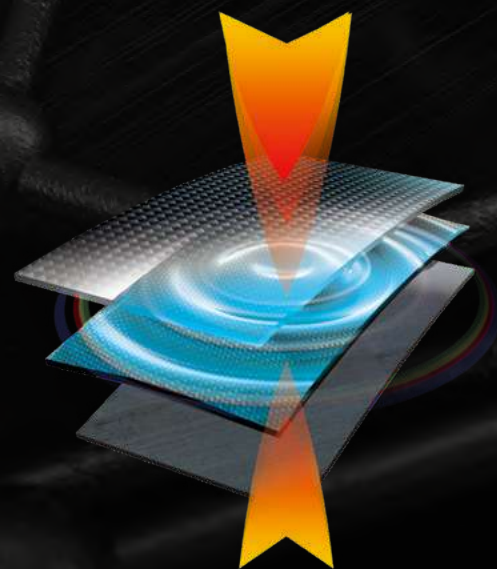
GRAPHENE
NANO CARBON TECH



Graphene is the material to have won the Nobel Prize and is referred 'the material of dreams'. It is lighter than wood, stronger than diamond as well as the smallest material that mankind has ever discovered. Based on the development of these graphene-applied carbon prepreg, WIAWIS was able to develop stronger, more accurate and more durable bows by maximizing the performance of the carbon.

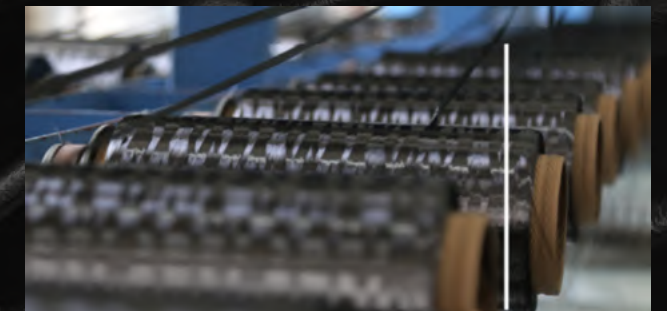
APPLICATION OF COUNTER VEIL SYSTEM

A special material laminated in the limb base, Counter veil system efficiently absorbs the shock and vibration in shooting. It reduces unnecessary movement and improves bow accuracy.



SELF-DEVELOPMENT AND PRODUCTION OF MATERIALS OPTIMIZED A BOW

The quality of carbon prepreg has a direct affect on bow performance. WIAWIS carried out detailed studies on various factors that would affect bow performance, such as: accuracy; rigidity; rebound force (modulus); durability; shock; vibration absorption etc. The studies enabled development of high quality nano carbon prepreg, designed and optimized specifically for the bow. It is used today in the manufacturer production of our bows.



FOAM CORE AFFECTING ON BOW PERFORMANCE

The lighter and stronger special foam core developed with WIAWIS' own technology not only increases arrow speed but also decreases bow torsion of about 40 percent compared to other foam cores. Also, its superior performance to absorb impact and vibration reduces unnecessary movement of the bow at the moment of shooting and improves its accuracy.



Mixture of raw materials



Molding and hardening



Cutting in width 45mm and sanding

WIAWIS REVOLUTION TECHNOLOGY

ANALYSIS & DESIGN

The WIAWIS bows are developed with the best expertise and efficient design through scientific analysis by a group of archery experts.



The elements that directly affect the performance of the bow, that is, center-shot, torsion of limbs & a riser, shock absorption, vibration reduction, bow torque, as well as shooting feeling are analyzed scientifically and designed by a group of archery experts.



WIAWIS bows are planned and designed efficiently by a group of top design experts who have won the Reddot Design Award.



Our expert designers have more than 20 years of knowledge for production/manufacture of WIAWIS bows, as well as experience and know-how as professional archers. WIAWIS bows are created by the best experts from the design to the production of WIAWIS products.

CONTENTS

CARBON RISER

META LX
META DX
RADICAL-PRO
INNO CXT
CX7

ALUMINUM RISER

ATF-DX
ATF-X
WINEX

LIMBS

MXT-XT FOAM
MXT-XT WOOD
NS-XP FOAM
NS-XP WOOD
MXT-XP FOAM
MXT-XP WOOD
NS-G FOAM
NS-G WOOD
CX7 FOAM
CX7 WOOD
WINEX

ACCESSORIES

APPAREL

WIAWIS risers and limbs represent the pinnacle of nano carbon technology. WIN&WIN's carbon technology is excellent at absorbing shock and minimizing unnecessary movement to make shooting more accurate and stable. Better, faster, stronger!

WIAWIS



LIM Sihyeon (KOREA)

2025 WIAWIS RISER

CARBON RISER



META LX

META DX

RADICAL-PRO

INNO CXT

CX7

ALUMINUM RISER



ATF-DX

ATF-X

WINEX

META LX TECHNOLOGY

1260G WITH EHS DAMPERS

META LX carbon riser is approximately 100g lighter than standard aluminum and carbon risers, making it the most efficient weight for archers.

This efficient weight of riser increases the usability of stabilizers for archers to choose more various options for their shooting style.

HIGH MODULUS CARBON FRAME

The independently developed GX FOAM CORE is applied to the front and rear of the riser to improve rigidity and minimize torque. The rigidity is improved while weight is reduced.

The high-modulus carbon frame is built into the position of the sight window and the bottom of the grip to improve rigidity and effectively control torque. This increases stability and accuracy.

This riser is lighter but still has maximized stability, accuracy, and forgiveness when shooting.

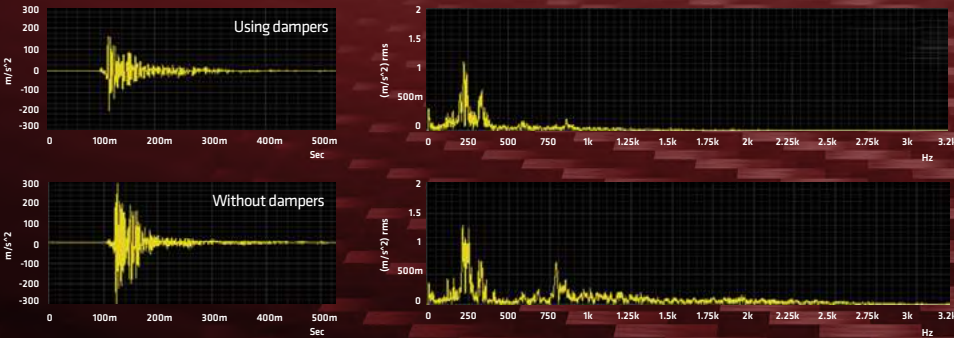
ABSORBING SHOCK AND VIBRATION, AND IMPROVED TORQUE

The META LX riser is become lighter and stronger. It effectively absorbs impact when shooting and reduces torque to increase accuracy and forgiveness.

When shooting, torque happens when the arrow leaves the string and moves through the riser, directly affecting arrow flight.

META LX riser has approximately 38% less torque compared to a standard aluminum riser.

Shock and vibration at the moment of release are significantly reduced compared to existing models



META LX



THE ADDED APPEAL OF THE CARBON RISER

The META LX riser features High Modulus Carbon, along with the excellent shock absorption effect of the EHS damper and special foam core, making it lighter but still stronger.

TECH DETAILS

| | |
|----------|------------------------|
| LENGTH | 25 inches |
| WEIGHT | 1,260 g |
| TYPE | RH / LH |
| MATERIAL | Graphene / Nano Carbon |



META CAP

META CAP weighs 9 grams and once you change all 3 original harmonic dampers, you can reduce a riser weight by a total of 47 grams. (Ref. MATHEWS® EHS™ HARMONIC DAMPER weighs 32 grams and MATHEWS® HARMONIC DAMPER weighs 10 grams respectively.)

COLORS



BLACK REMINGTON RED BRILLIANT BLUE PEARL SUN YELLOW KHAKI METAL BLUE RAY CHAMELEON MYSTIC WHITE



META DX TECHNOLOGY

NOBEL PRIZE-WINNING GRAPHENE

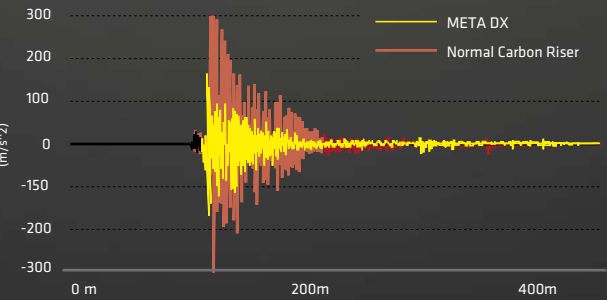
META DX is made of graphene carbon which is the best carbon material of WIAWIS. It improves the shock resistance caused by shooting and therefore minimizes unnecessary movement, resulting in improved arrow grouping.

BETTER TORQUE FREE CONSTRUCTION

In addition, Special Steel has been inserted to assist in the reduction of vibration and torsion caused when force is transferred from the bow limbs. The Mathews® EHS™ dampening system has been introduced to improve stability of the shoot feeling, accuracy of the bow and ultimately arrow grouping.

ADVANCED STRUCTURAL DESIGN

META DX riser has been designed to reduce the shock and vibration after shooting more effectively. The structural design is more dynamic and aesthetically pleasing than previous design products.



META DX

FOR ULTIMATE PRECISE SHOOTING

META DX features are functionally upgraded with groundbreaking structural design. The special design of the META DX riser adapts materials developed by WIAWIS technology maximizing accuracy and stability at the moment of shooting.

TECH DETAILS

| | |
|----------|------------------------|
| LENGTH | 25 inches |
| WEIGHT | 1,380 g |
| TYPE | RH / LH |
| MATERIAL | Graphene / Nano Carbon |



META CAP weighs 9 grams and once you change all 3 original harmonic dampers, you can reduce a riser weight by a total of 47 grams. (Ref. MATHEWS® EHS™ HARMONIC DAMPER weighs 32 grams and MATHEWS® HARMONIC DAMPER weighs 10 grams respectively.)

COLORS



All the weight parts need to be removed for the Barebow division (The rubber parts can be inserted into the riser)

RADICAL-PRO TECHNOLOGY

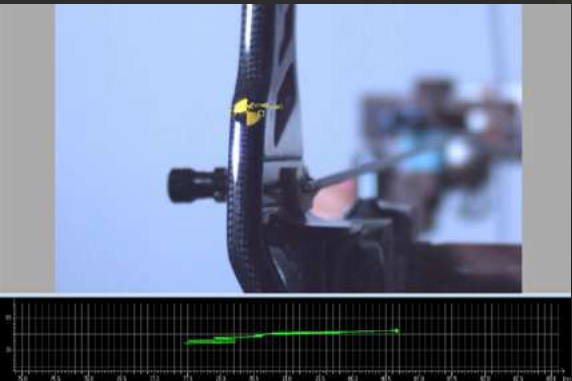
SPECIALLY DESIGNED CENTER SUSPENSION OF RADICAL-PRO

The RADICAL-PRO riser has been designed like no other riser specifically to reduce vibration and bow torque when shooting. Unlike a dampener that absorbs vibration after shooting but has no effect on bow torque at the moment of shooting. Ultimately this assists to better arrow grouping by drastically reducing bow torque.

Radical Pro riser shows improved properties on vibration absorption at the same 44lbs limbs set-up.

HERE'S THE RADICAL-PRO NANO CARBON RISER

In addition, Special Steel has been inserted to assist in the reduction of vibration and torsion caused when force is transferred from the bow limbs. The Mathews® EHST™ dampening system has been introduced to improve stability of the shoot feeling, accuracy of the bow and ultimately arrow grouping.



RADICAL-PRO

HIGHEST SHOCK ABSORPTION

RADICAL-PRO riser is made by nano carbon technology applying the innovative material of graphene. Its Center Suspension improves rigidity and durability while effectively controlling shooting shock and minimizing bow torque. Also, a specially designed Sound Amplification board for the clicker provides clear sound in 3000~6000Hz that is the most audible frequency to the archer and making clicker timing regular. This will enhance better arrow grouping.

TECH DETAILS

| | |
|----------|------------------------|
| LENGTH | 25 inches |
| WEIGHT | 1,300 g |
| TYPE | RH / LH |
| MATERIAL | Graphene / Nano Carbon |

COLORS



All the weight parts need to be removed for the Barebow division (The rubber parts can be inserted into the riser)

13mm
TILLER BOLT

7
DEFAULT GRIP

INNO CXT

UNIQUE FUNCTIONS OF THE INNO CXT BOW

The CXT riser has been in production for many years and has been a very popular riser winning medals at all levels. High-tech engineering creates the best carbon material mixture for WIAWIS bows, improving product quality and gaining athletes' confidence.

WEIGHT CONTROL SYSTEM

The riser weight is adjustable so the archers can customize the weight to fit their desire.
* 4 flat weights are included (1 flat weight : 25 g)



TECH DETAILS

| | | | |
|----------|---------------------------|---------------------------|---------------------------|
| LENGTH | 23 inches | 25 inches | 27 inches |
| WEIGHT | 1,120 g (light:1,070g) | 1,200 g (light:1,150g) | 1,260 g (light:1,210g) |
| TYPE | RH | RH / LH | RH |
| MATERIAL | Nano Carbon | | |

COLORS



CX7

FIRST STEP TO USE CARBON RISER

The CX7 riser is designed and manufactured with carbon prepreg where carbon fiber is distributed evenly in all directions. The rigid design emphasizes the features of the stable carbon material riser to minimize shooting errors.

TECH DETAILS

| | |
|----------|------------------|
| LENGTH | 25 inches |
| WEIGHT | 1,280 g |
| TYPE | RH / LH |
| MATERIAL | Carbon Composite |

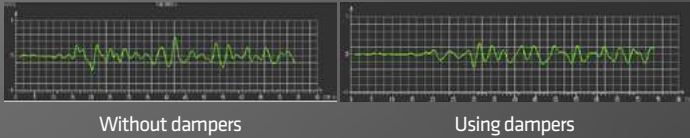
COLORS



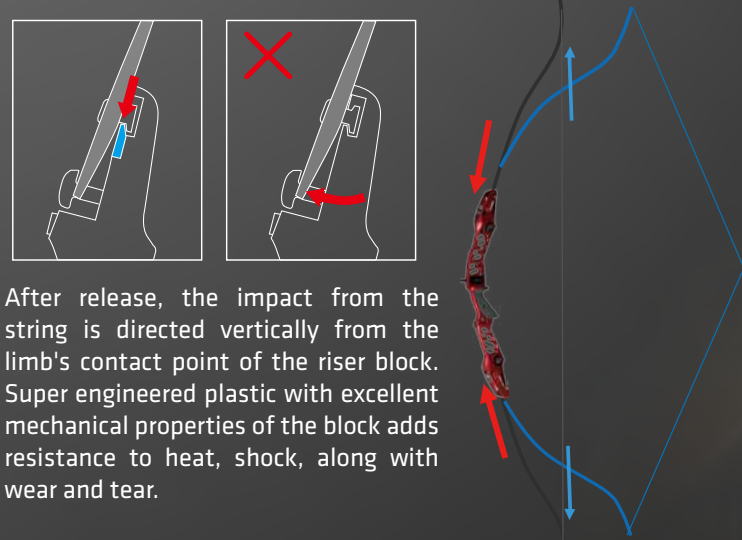
ATF-DX TECHNOLOGY

APPLIED EHS DAMPING SYSTEM

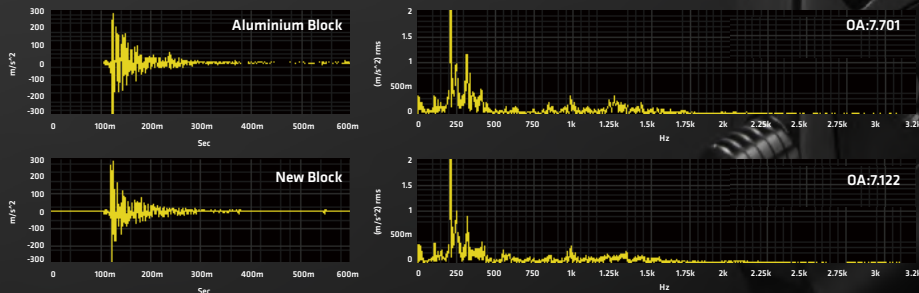
ATF-DX was designed by combining technology and experience of WIAWIS and completed with precision. The EHS damping system was introduced to reduce shock and vibration at the moment of release. With the EHS damper, the shock and vibration of shooting is greatly reduced, making it possible for an archer to obtain more stability of their shot.



SPECIALIZED PLASTIC ADDED AS A COMPONENT FOR THE ALUMINUM HYBRID BLOCK



Minimizes shock and vibration occurring at the moment of release by about 8%, Noise prevention by the friction of metal.



Super
Engineering
plastic

MATHEWS' EHS[®]
HARMONIC DAMPER

ATF-DX

ATF-DX IS THE MORE STABLE ALUMINUM HANDLE

ATF-DX introduces the same dampers used in the META-DX handle to increase effective reduction in vibration caused by the impact at the moment of shooting. It minimizes unnecessary movement of the bow to assist with improvement of arrow grouping. The ergonomically designed grip provides a positive sensory feeling, increasing stability. Rest plates are adjustable as 4 levels to suit your arrows and your tuning.

TECH DETAILS

| | | |
|----------|--------------------------|-----------|
| LENGTH | 25 inches | 27 inches |
| WEIGHT | 1,360 g | 1,430 g |
| TYPE | RH / LH | RH / LH |
| MATERIAL | Aluminum / CNC machining | |

COLORS



13mm
TILLER BOLT

DX8
DEFAULT GRIP

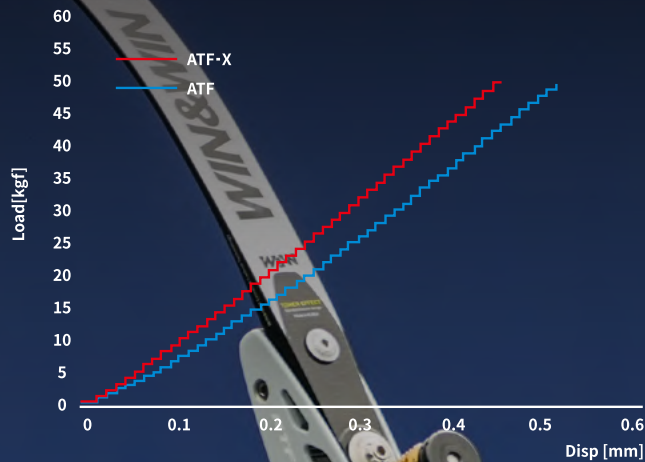


ATF-X TECHNOLOGY

ATF-X FEATURES

To enhance the features of the aluminum riser while maintaining the same net weight as the ATF riser, it efficiently improved stiffness and anti-twisting so that it is more stable shooting with less vibration and reduced bow torque.

When shooting with ATF and ATF-X risers on the same 44lb limbs, ATF-X riser is less vibration than ATF riser.



ATF-X

ATF-X HANDLE RISER CHOSEN BY TOP WORLD CLASS ATHLETES

ATF-X is a reinforced model of the ATF riser which was used by top world class athletes. Through the balance of the riser design, ATF-X makes the shooting feel more powerful. Anti-torsional 45-degree cross design.

TECH DETAILS

| | | |
|----------|--------------------------|-----------|
| LENGTH | 25 inches | 27 inches |
| WEIGHT | 1,280 g | 1,350 g |
| TYPE | RH / LH | RH / LH |
| MATERIAL | Aluminum / CNC machining | |

COLORS



13mm
TILLER BOLT

7
DEFAULT GRIP

JEON Hunyoung (KOREA)

WINEX

THE IDEAL BOW FOR SERIOUS SHOOTING

WINEX riser is a long-running riser which is designed to be faithful to the most basic role of the riser. Several new designs have been introduced and have been loved by many archers.

TECH DETAILS

| | | |
|----------|-----------|-----------|
| LENGTH | 23 inches | 25 inches |
| WEIGHT | 1,080 g | 1,140 g |
| TYPE | RH | RH / LH |
| MATERIAL | Aluminum | |

COLORS



INNOVATIVE WIAWIS

WIAWIS's technology through differentiated materials, design and manufacturing skills with serious quality control is leading the world in bow innovation.





Marcus D'ALMEIDA (BRAZIL)

2025 WIAWIS LIMBS



MXT-XT



NS-XP



MXT-XP



NS-G



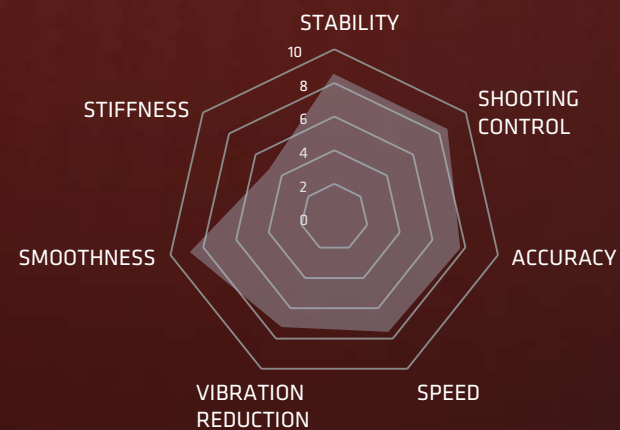
CX7



WINEX

MARVELOUS EXTREME BOW TECHNOLOGY

MXT-XT



Mainly focuses on smoothness.

Suitable for archers who have long draw lengths.

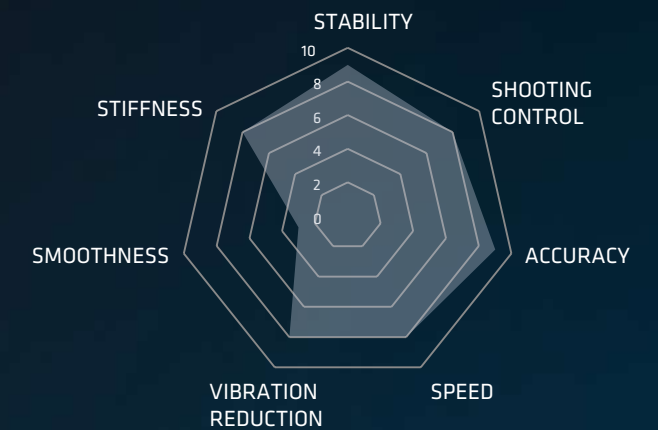
Suitable for archers who prefer natural drawing and aiming techniques.

- Graphene carbon
- IRR(Infrared Reflection coating)
- Heat resistant material
- Soft Epoxy Limb Damper
- Optimized carbon pattern design
- Constant balance of strain distribution.
- Easy to control
- Improved anti-torsion
- Improved stability



MOST HEAT RESISTANCE, STABILITY & ACCURACY

NS-XP



Mainly focuses on power(stiffness).

Suitable for archers who have short draw lengths.

Suitable for archers who prefer accurate drawing and aiming technique.

- Graphene carbon
- IRR(Infrared Reflection coating)
- Heat resistant material
- Soft Epoxy Film
- Optimized carbon pattern design
- Constant balance of strain distribution.
- Easy to control

MXT-XT TECHNOLOGY

IMPROVED HEAT RESISTANCE

Foam core with improved heat resistance to reduce decrease in limb poundage and improve durability, due to the effects of rising temperatures caused by climate change, and stability enhanced with IRR special coating.

EHR (Enhanced Heat Resistance) Foam Core : Stronger and lighter with enhanced heat-resistant EHR foam core dramatically improves stability against heat, increasing the archer's concentration and results in a more forgiving setup.

IRR (Infrared Reflection Coating) : A special coating with infrared protection on the surface of the limbs reduces a temperature rise by blocking direct heat.

STABILITY & FORGIVENESS

SEF (soft epoxy film) special materials have been used to dramatically improve shock absorption and vibration damping performance, and strain distribution with improved power and stability improves the stability of the upper and lower limbs, thereby increasing forgiveness.

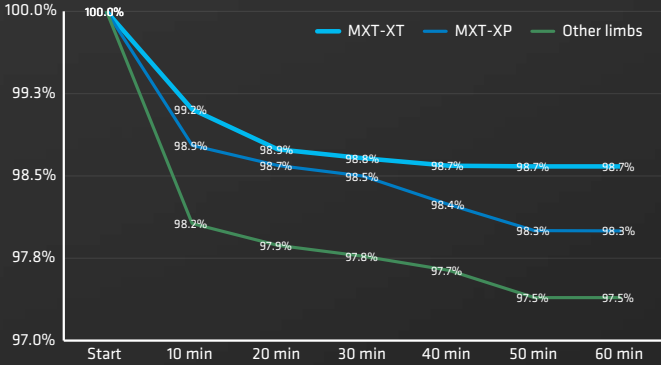
* SEF made of flexible, tough and transparent epoxy resin, it is a high-tech material with strong bonding to carbon prepreps and excellent shock absorption and vibration damping performance.

F-X curve

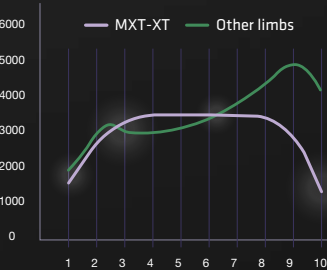
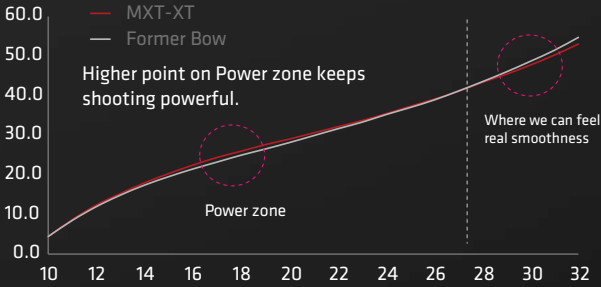
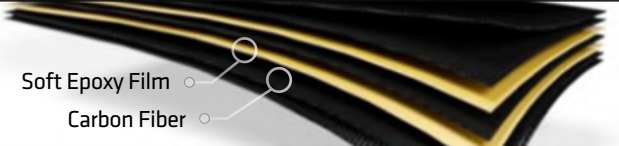
MXT-XP shows the F-X curve, which means 'easy to draw' with a low poundage increase rate when pulled more than 27 inches. In comparison, NS gives more stiffer feeling but it can increase the arrow stability.

BETTER STRAIN DISTRIBUTION ON LIMBS

Combination of various high-performance carbons with different characteristics improved the allow concentration and accuracy, the even strain distribution results in the great rigidity, accuracy and balance of the limbs.



The change of strength at Heat Chamber 60°C*1HR



More strain distribution on MXT-XT

MXT-XT FOAM

TECH DETAILS

| | |
|----------|--|
| LENGTH | Short, Medium, Long |
| WEIGHT | 28 to 48 lbs (2 lbs increment) |
| MATERIAL | Graphene Foam Core / High Modulus Carbon |

MXT-XT WOOD

TECH DETAILS

| | |
|----------|--------------------------------------|
| LENGTH | Short, Medium, Long |
| WEIGHT | 28 to 48 lbs (2 lbs increment) |
| MATERIAL | Wood Foam Core / High Modulus Carbon |



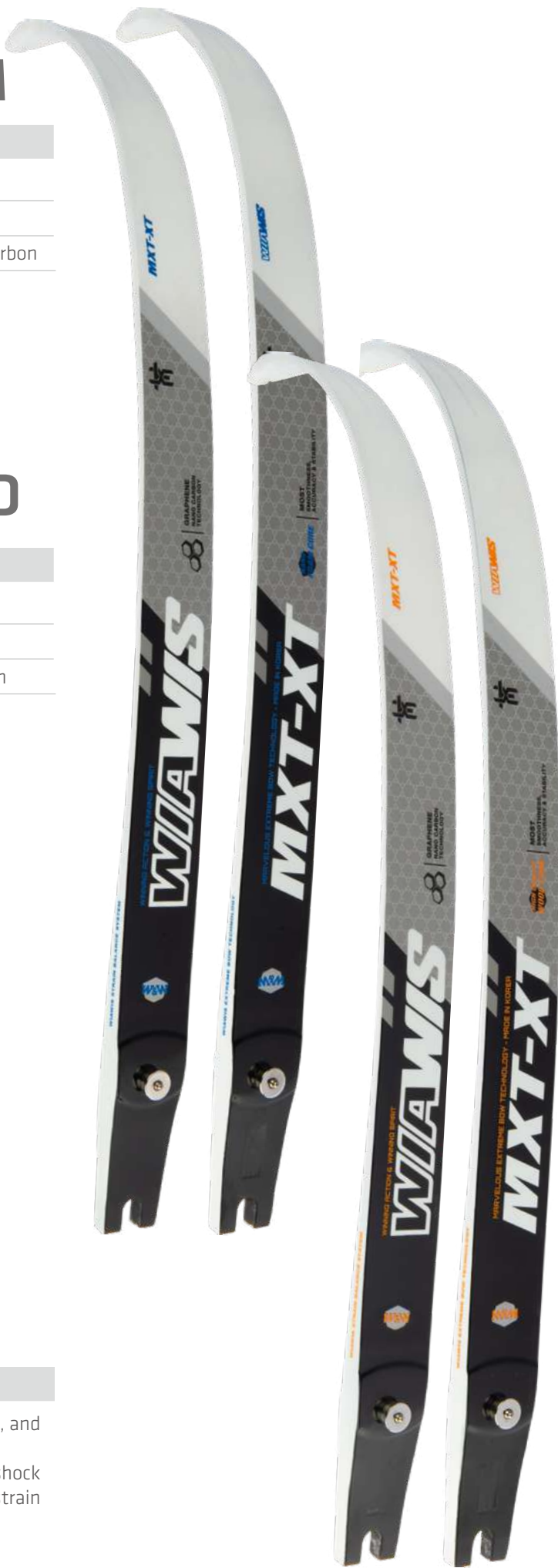
SOFT EPOXY FILM



HEAT REFLECTIVE COOL PIGMENTS

STABILITY AND PERFORMANCE REDEFINED

The MXT-XT offers softer functionality, reduced vibration, and greater stability compared to the MXT-XP. Special coatings and materials significantly improve shock absorption and vibration damping, while uniform strain distribution maximizes rigidity, accuracy, and balance.



NS-XP TECHNOLOGY

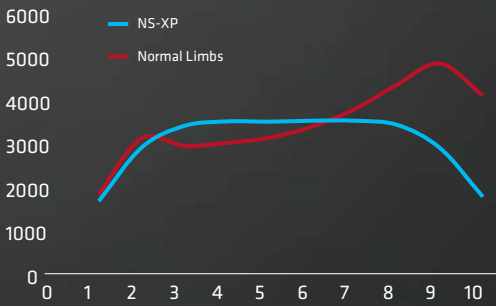
SEF(Soft Epoxy Film) APPLYING

SEF special materials were applied to archery for the first time in the world to dramatically increase shock absorption and enhance vibration reduction performance. It fundamentally reduces the impact and vibration transferred to the bow, improving the stability of the bow and increasing forgiveness.

NS-XP is applied with WIAWIS strain distribution, which improves both strength and stability, by analyzing the correlation between limb bending distribution and speed that WIN&WIN has proven through research.

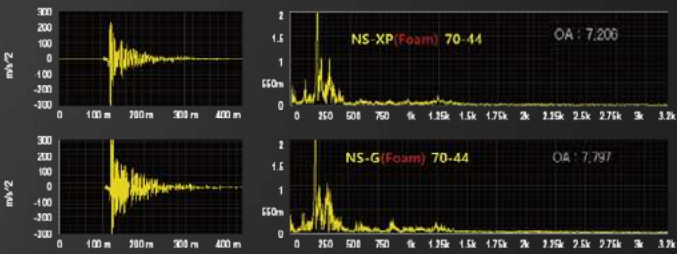
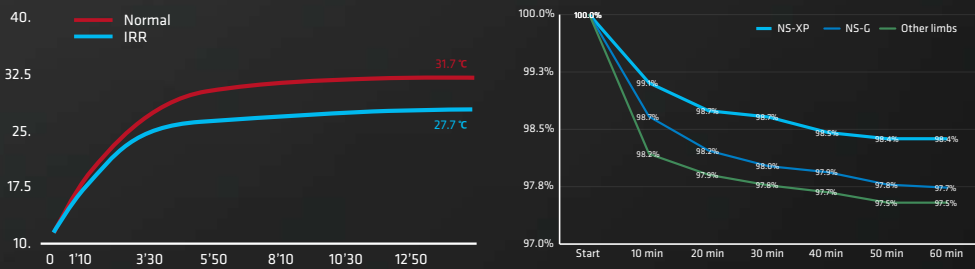
STRAIN DISTRIBUTION FOR ACCURACY AND STABILITY

NS-XP is applied with WIAWIS strain distribution, which improves both strength and stability, by analyzing the correlation between limb bending distribution and speed that WIN&WIN has proven through research.



IRR: Infrared Reflection coating

A special coating with infrared protection on the surface of the limbs reduces temperature rise by blocking more heat.



OPTIMIZED CARBON PATTERN DESIGN

Stability and accuracy after shooting were improved by a combination of various high-performance carbons with different characteristics with optimized pattern. Special carbon pattern design for NS-XP improves stability of torsional stiffness, durability, changes in pound and speed, bow movement.




NS-XP FOAM


| TECH DETAILS | |
|--------------|--|
| LENGTH | Short, Medium, Long |
| WEIGHT | 28 to 48 lbs (2 lbs increment) |
| MATERIAL | Graphene Foam Core / High Modulus Carbon |

NS-XP WOOD

| TECH DETAILS | |
|--------------|--------------------------------------|
| LENGTH | Short, Medium, Long |
| WEIGHT | 28 to 48 lbs (2 lbs increment) |
| MATERIAL | Wood Foam Core / High Modulus Carbon |



SOFT EPOXY FILM



HEAT REFLECTIVE COOL PIGMENTS

STABILITY AND PERFORMANCE REDEFINED

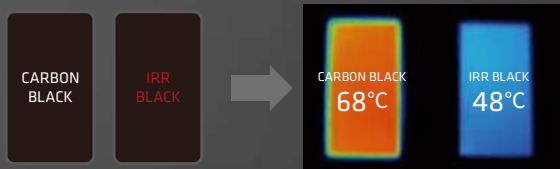
MXT-XP limbs have the most stable design since launching the MXT limb series, which gives the feeling of stable shooting with anti-twisting and smooth drawing. Also, special paint is used to enhance heat resistance on the surface of the limbs to enable consistence performance during changing weather conditions.



MXT-XP TECHNOLOGY

USE SPECIAL PAINT TO BLOCK INFRARED RAYS

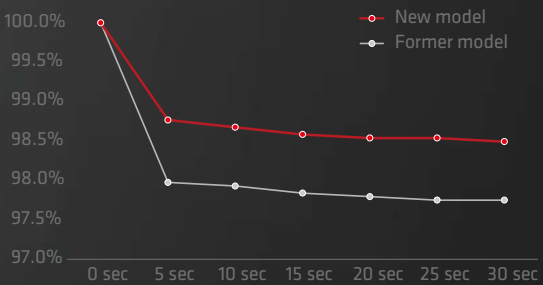
Special paint reflecting infrared rays on the surface of the limbs was used to block the heat rays from sunlight and reduce the temperature effect on the limbs.



*** USE SPECIAL PAINT TO BLOCK INFRARED RAYS : IRR**
Reduce the high temperature effect

POUND CHANGING IN FULL-DRAWING

The MXT-XP limbs maximize archers' shooting skills and improves arrow grouping by maintaining more consistent power over time at full draw.



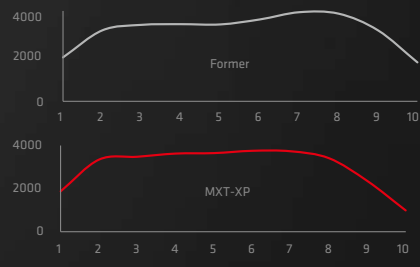
LIMB CURVE TO GIVE STABILITY AND SMOOTHNESS

WIAWIS MXT-XP were developed based on accumulated data that has analyzed the correlation between stability and speed according to the strain distribution of the limbs.

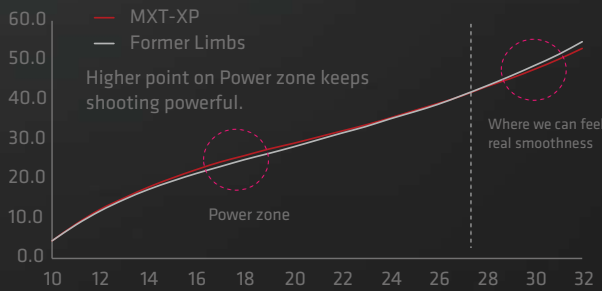
They feature 1) the optimized curve to increase the speed and stability with minimizing the stress of the limbs. 2) They were designed to give smoothness in drawing. 3) better concentration and better arrow grouping by improved limbs anti-torsion after shooting. While maximizing accuracy and stability, which are main characteristics of WIAWIS bows. Even for the archer tries to shoot first, MXT-XP were designed to be easy to control and comfortable in short period.



More strain distribution on MXT-XP



F-X CURVE



MXT-XP FOAM

| TECH DETAILS | |
|--------------|--|
| LENGTH | Short, Medium, Long |
| WEIGHT | 28 to 48 lbs (2 lbs increment) |
| MATERIAL | Graphene Foam Core / High Modulus Carbon |

MXT-XP WOOD

| TECH DETAILS | |
|--------------|--------------------------------------|
| LENGTH | Short, Medium, Long |
| WEIGHT | 28 to 48 lbs (2 lbs increment) |
| MATERIAL | Wood Foam Core / High Modulus Carbon |



SOFT EPOXY FILM



HEAT REFLECTIVE COOL PIGMENTS

STABILITY AND PERFORMANCE REDEFINED

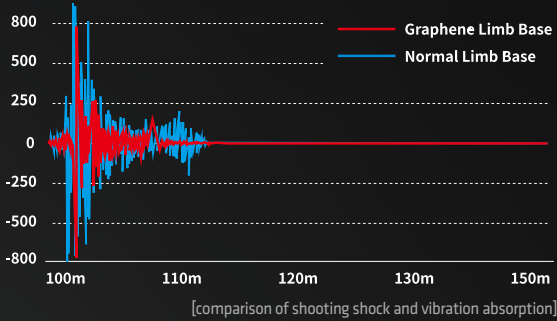
MXT-XP limbs have the most stable design since launching the MXT limb series, which gives the feeling of stable shooting with anti-twisting and smooth drawing. Also, special paint is used to enhance heat resistance on the surface of the limbs to enable consistence performance during changing weather conditions.



NS-G TECHNOLOGY

GRAPHENE LIMB BASE

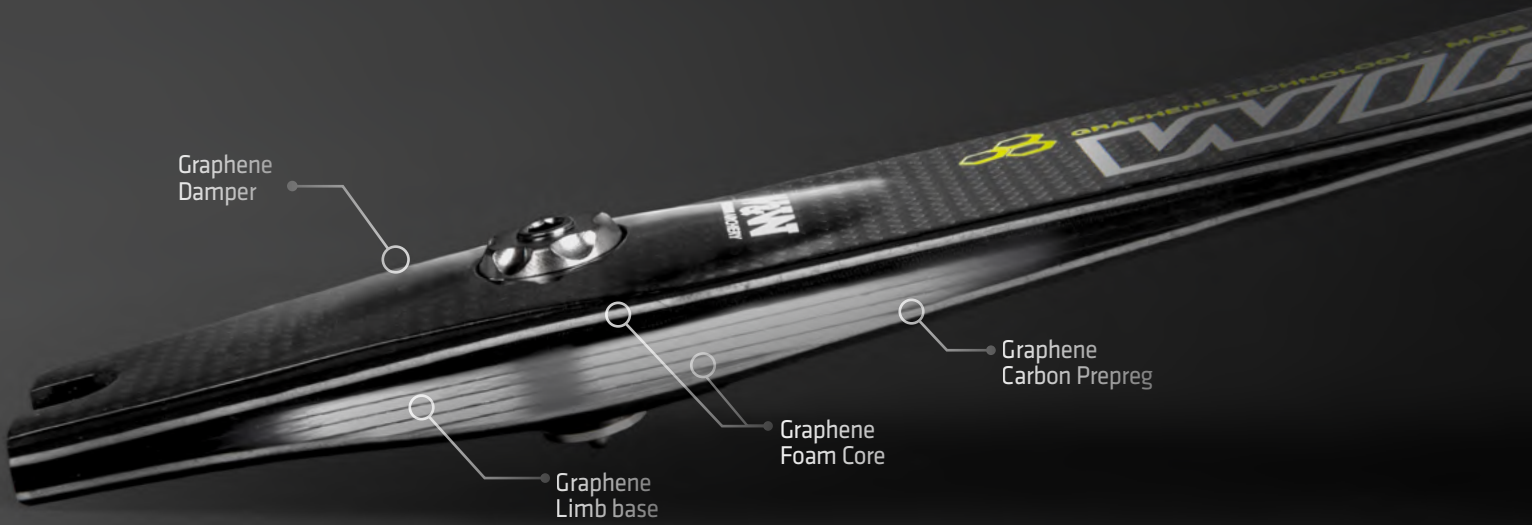
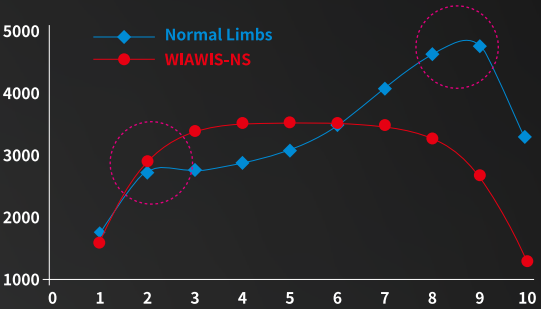
The WIAWIS NS-G limb uses a limb base made of graphene prepreg-dispersed in a high molecular epoxy which has been shown to absorb shock and vibration more efficiently, and help stabilize limb movement after shooting. This new concept of limb construction was solely developed and used by WINGWIN.



STRAIN-BALANCE TECHNOLOGY

WINGWIN has enhanced the WIAWIS NS-G limbs in both power and stability by applying Strain-Balance technology. The result of years of research, Strain-Balance technology helps WINGWIN find the optimal limb flex profile through analyzing the relationship between stability and speed according to the limb flex. The NS-G limbs feature enhanced smoothness while drawing without compromising the arrow speed and accuracy which WINGWIN is known for.

WIAWIS NS-G limbs employ graphene technology to offer shorter and narrower string movement than any other limbs and provide the most efficient energy transfer. This performance creates better arrow grouping with forgiveness.



NS-G FOAM

| TECH DETAILS | |
|--------------|---|
| LENGTH | Short, Medium, Long |
| WEIGHT | 28 to 48 lbs (2 lbs increment) |
| MATERIAL | Graphene Foam Core & Graphene Limb base / High Modulus Carbon |

NS-G WOOD

| TECH DETAILS | |
|--------------|--|
| LENGTH | Short, Medium, Long |
| WEIGHT | 28 to 48 lbs (2 lbs increment) |
| MATERIAL | Wood Core & Graphene Limb base / High Modulus Carbon |

STABILITY AND PERFORMANCE REDEFINED

The NS-G is very first limb in the world that uses innovative graphene materials for archery equipment. It also adds a function that minimizes the impact that occurs when shooting in the bottom core part of the limbs. It minimizes bow torque that directly affects the arrow light. Softer, but more advanced competition limbs that used graphene on foam cores to ensure that the arrows don't lose speed and light stability.



CX7 FOAM

| TECH DETAILS | |
|--------------|--------------------------------------|
| LENGTH | Short, Medium, Long |
| WEIGHT | 28 to 48 lbs (2 lbs increment) |
| MATERIAL | Nano Foam Core / High Modulus Carbon |
| FINISH | Matt |

CX7 WOOD

| TECH DETAILS | |
|--------------|--------------------------------------|
| LENGTH | Short, Medium, Long |
| WEIGHT | 28 to 48 lbs (2 lbs increment) |
| MATERIAL | Wood Foam Core / High Modulus Carbon |
| FINISH | Matt |

CLEAN WHITE DESIGN THAT STANDS OUT

Made of INNO EX POWER's equivalent materials, CX7 is a limb that enables you to feel WIN&WIN's technology more easily with cost effectiveness. CX7 limb is an introductory limb that lets you feel the difference about high-end archery equipment.



WINEX

| TECH DETAILS | |
|--------------|--------------------------------|
| LENGTH | Short, Medium, Long |
| WEIGHT | 28 to 48 lbs (2 lbs increment) |
| MATERIAL | Royal Cross Carbon |

STABILITY AND PERFORMANCE REDEFINED

The WINEX limb has been continuously developed with the WIN&WIN's limb manufacturing process that is improved and refined over time based on WIN&WIN's traditional limb making technology.





NODA Satsuki (JAPAN)

WIAWIS BOW SPECIFICATIONS

RISER TECHNICAL SPECIFICATIONS

| RISER | LENGTH | MASS WEIGHT | TYPE | MATERIAL |
|-------------|---------|-------------|-------|--------------------------|
| META LX | 25 inch | 1,260 g | RH/LH | Graphene / Nano Carbon |
| META DX | 25 inch | 1,380 g | RH/LH | Graphene / Nano Carbon |
| RADICAL-PRO | 25 inch | 1,300 g | RH/LH | Graphene / Nano Carbon |
| INNO CXT | 23 inch | 1,120 g | RH | Nano Carbon |
| | 25 inch | 1,200 g | RH/LH | |
| | 27 inch | 1,260 g | RH | |
| CX7 | 25 inch | 1,280 g | RH/LH | Carbon Composite |
| ATF-DX | 25 inch | 1,360 g | RH/LH | Aluminum / CNC Machining |
| | 27 inch | 1,430 g | | |
| ATF-X | 25 inch | 1,280 g | RH/LH | Aluminum / CNC Machining |
| | 27 inch | 1,350 g | | |
| WINEX | 23 inch | 1,190 g | RH | Aluminum / CNC Machining |
| | 25 inch | 1,250 g | RH/LH | |

LIMBS TECHNICAL SPECIFICATIONS

| LIMBS | LENGTH | TYPE | MATERIAL |
|------------------|---------------------|-----------|---|
| MXT-XT FOAM CORE | Short, Medium, Long | 28~48 lbs | Graphene Foam Core & Graphene Limb base / High Modulus Carbon |
| MXT-XT WOOD CORE | Short, Medium, Long | 28~48 lbs | Wood Core & Graphene Limb base / High Modulus Carbon |
| NS-XP FOAM CORE | Short, Medium, Long | 28~48 lbs | Graphene Foam Core / High Modulus Carbon |
| NS-XP WOOD CORE | Short, Medium, Long | 28~48 lbs | Wood Core / High Modulus Carbon |
| MXT-XP FOAM CORE | Short, Medium, Long | 28~48 lbs | Graphene Foam Core & Graphene Limb base / High Modulus Carbon |
| MXT-XP WOOD CORE | Short, Medium, Long | 28~48 lbs | Wood Core & Graphene Limb base / High Modulus Carbon |
| NS-G FOAM CORE | Short, Medium, Long | 28~48 lbs | Graphene Foam Core / High Modulus Carbon |
| NS-G WOOD CORE | Short, Medium, Long | 28~48 lbs | Wood Core / High Modulus Carbon |
| CX7 FOAM CORE | Short, Medium, Long | 28~48 lbs | Nano Foam Core / High Modulus Carbon |
| CX7 WOOD CORE | Short, Medium, Long | 28~48 lbs | Wood Core / High Modulus Carbon |
| WINEX | Short, Medium, Long | 28~48 lbs | Foam Core / Royal Cross Carbon |



2025 ACCESSORIES

SIGHT
STABILIZER
UPPER STABILIZER
DAMPER / CAP
WEIGHT
BOLT
V-BAR
CUSHION PLUNGER
ARROW REST
CLICKER
FINGER TAB
GRIP
CHEST GUARD
ARM GUARD
QUIVER
BOW STAND
BOW CASE
BACKPACK
ARROW TUBE
STRETCH BAND
T-BLOCK

WS 700

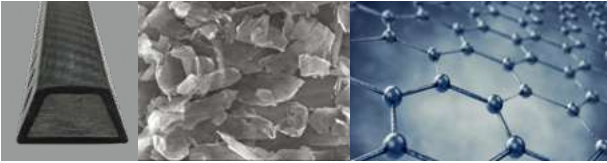


GRAPHENE FOAM CORE

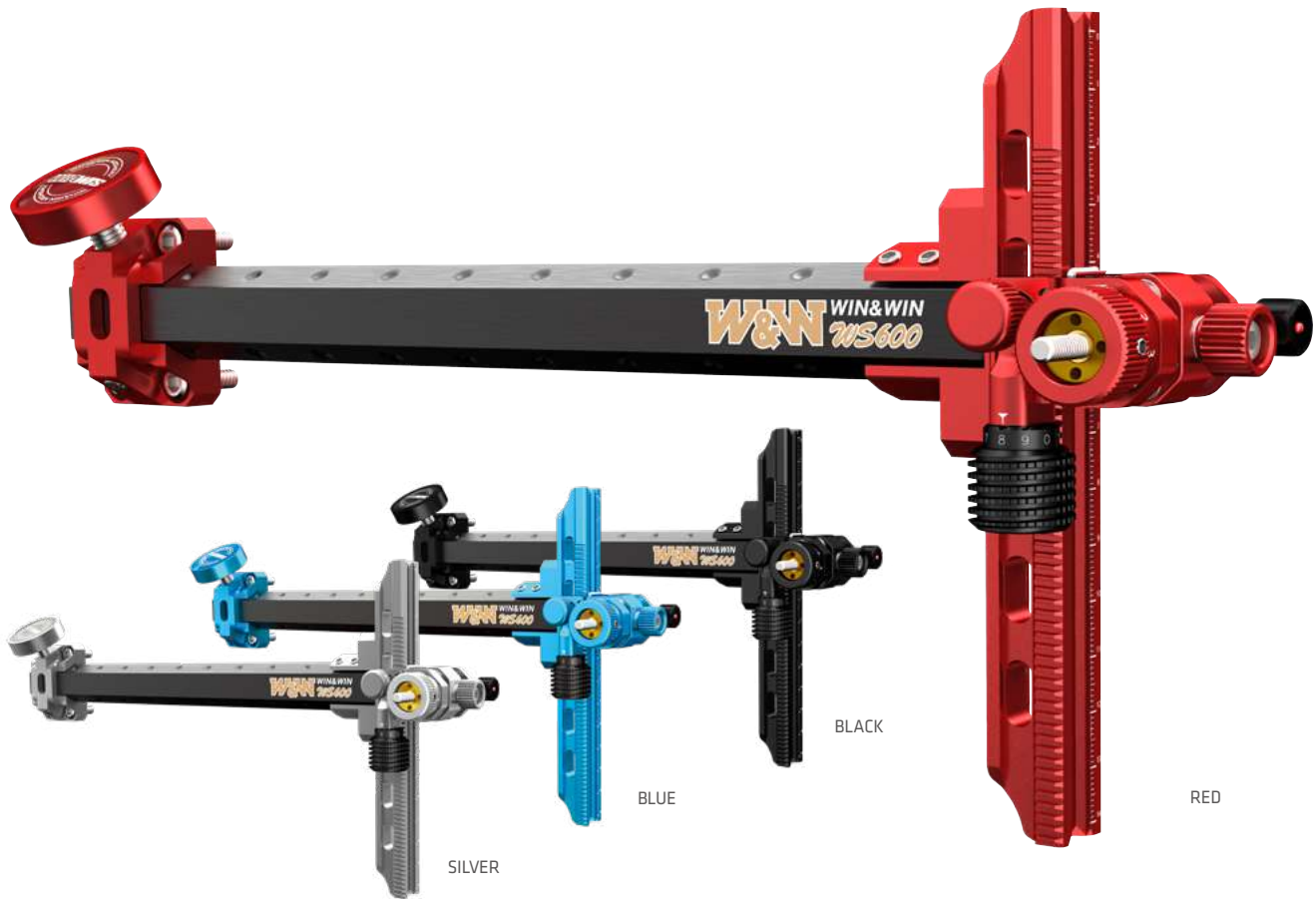
WS700 is WIN&WIN's brand new precision-machined competition sight, the evolution of the WS600 series. It has wheel tuners to accurately measure fine sight movements and a slide bar for convenient and smooth vertical adjustment. A unique bolt system securely locks the sight in place. Graphene exclusive technology inside its carbon extension bar protects the WS700 from damaging vibration that travels through a bow when it is shot. It also keeps weight to a minimum and prevents torque during shooting. Graphene is an atomic-scale honeycomb lattice made of carbon atoms. Graphene thickness of 0.2 nanometers is over 200 times stronger than the strongest steel and has improved shock absorption qualities over CNT(Carbon Nano Tube). That's why we call it 'the fruit of Nano technology'. Graphene foam is solid open-cell foam made of single-layer sheets of graphene. The material properties and structure provide excellent tensile strength and approximately double the impact strength over present foam materials. The use of this material in Archery products has been solely developed by WIN&WIN.

TECH DETAILS

| | |
|--------|---------|
| TYPE | RH / LH |
| WEIGHT | 207 g |



WS 600



NEVER COMPROMISE YOUR AIM

WS600 is WIN&WIN's precision-machined competition sight, trusted by some of the world's best archers. It has wheel tuners to accurately measure fine sight movements and a slide bar for convenient and smooth vertical adjustment. A unique bolt system securely locks the sight in place. Foam inside its carbon extension bar protects the WS600 from damaging vibration that travels through a bow when it is shot. It also keeps weight to a minimum and prevents torque during shooting.

TECH DETAILS

| | |
|--------|---------|
| TYPE | RH / LH |
| WEIGHT | 221 g |



ACS-LX STABILIZER



WIAWIS NEW ACS-LX STABILIZER

By using the TAPERED structure, the ACS-LX STABILIZER reduced the vibration and shock when shooting and enable archers to shoot more clearly with great rigidity and stability compared with another stabilizer which has the same weight but different structure.



TECH DETAILS

| | | |
|------------------|-------------------|-------------------|
| LONG ROD LENGTH | 26 inches (165 g) | 28 inches (168 g) |
| | 30 inches (171 g) | 32 inches (176 g) |
| SHORT ROD LENGTH | 10 inches (74 g) | 11 inches (77 g) |
| | 12 inches (80 g) | 14 inches (84 g) |
| | 15 inches (86 g) | |
| EXTENDER LENGTH | 3 inches (55 g) | 4 inches (60 g) |
| | 5 inches (65 g) | 6 inches (70 g) |

| | |
|--|------------------------|
| | BLACK |
| | REMINGTON RED |
| | BRILLIANT BLUE |
| | PEARL SUN YELLOW |
| | CHAMELEON MYSTIC WHITE |

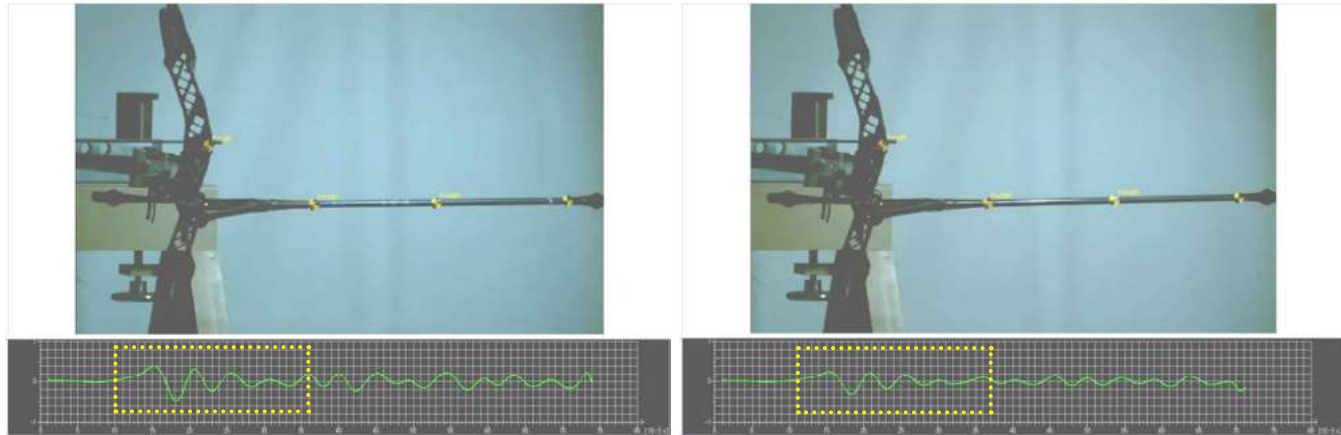
WIAWIS STABILIZER

Stabilizers require to be strong and rigid to suppress bow torque during shooting. They have been designed and manufactured to effectively reduce the impact and vibration generated during shooting.

WIAWIS stabilizer uses high-tech materials such as graphene carbon to improve stiffness and stability. The design is also maximized performance through WIAWIS's unique carbon pattern and tapered structure.



- High modulus carbon application
- Effective stiffness and tapered structure for better shock and vibration absorption
- Optimized mass weight



As a result of comparing the movement of the handle at the moment of shooting by using ACS-EL and ACS-LX equipped with the same NS-XP 70-44 and Weight, the movement of the ACS-LX Stabilizer is smaller and more stable

ACS-EL

The design of the ACS-EL stabilizer maximizes the performance by effectively minimizing bow torque, shock absorption and vibration characteristics

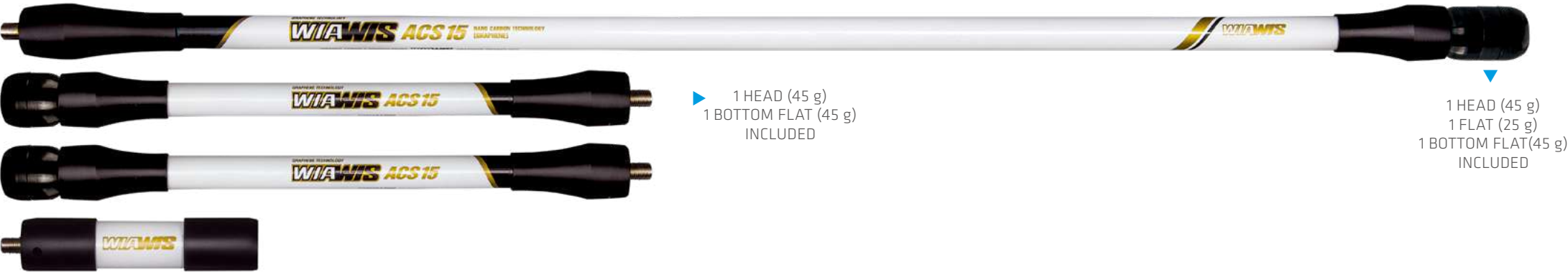


| | | |
|------------------|-------------------|-------------------|
| LONG ROD LENGTH | 26 inches (165 g) | 28 inches (168 g) |
| | 30 inches (171 g) | 32 inches (176 g) |
| SHORT ROD LENGTH | 10 inches (74 g) | 11 inches (77 g) |
| | 12 inches (80 g) | 14 inches (84 g) |
| | 15 inches (86 g) | |
| EXTENDER LENGTH | 3 inches (55 g) | 4 inches (60 g) |
| | 5 inches (65 g) | 6 inches (70 g) |

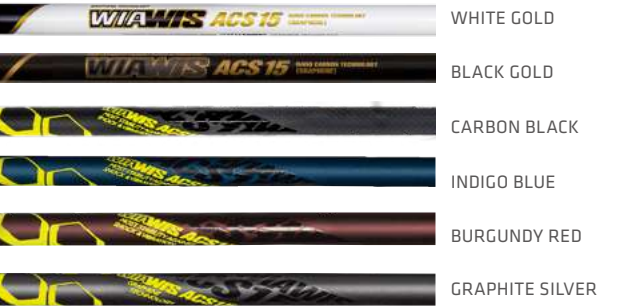


ACS 15

The ACS 15 is a 15Ø diameter, thin but weighty stabilizer with excellent shock resistance, vibration reduction, and stability, which effectively reduces the vibration and impact of shooting and improves the feeling of the shot. It has been designed not only for recurve shooters, but also for the compound market.

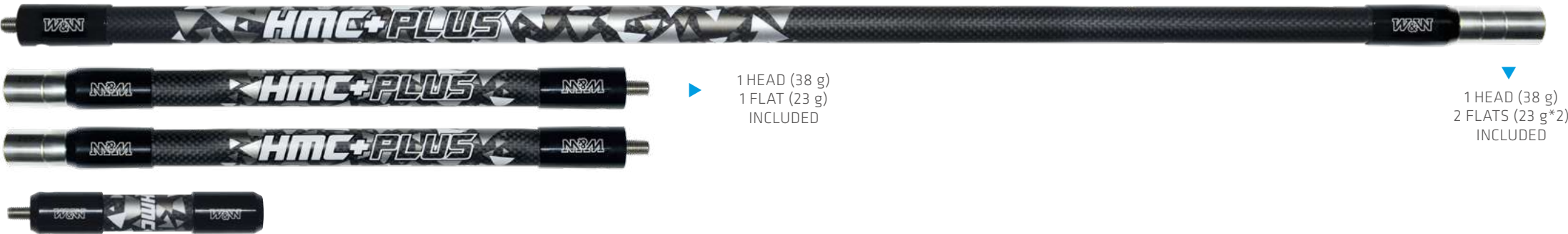


| | | |
|------------------|-------------------|-------------------|
| LONG ROD LENGTH | 26 inches (200 g) | 28 inches (210 g) |
| | 30 inches (220 g) | 32 inches (230 g) |
| SHORT ROD LENGTH | 10 inches (109 g) | 11 inches (112 g) |
| | 12 inches (115 g) | 14 inches (124 g) |
| | 15 inches (125 g) | |
| EXTENDER LENGTH | 3 inches (65 g) | 4 inches (80 g) |
| | 5 inches (90 g) | 6 inches (100 g) |

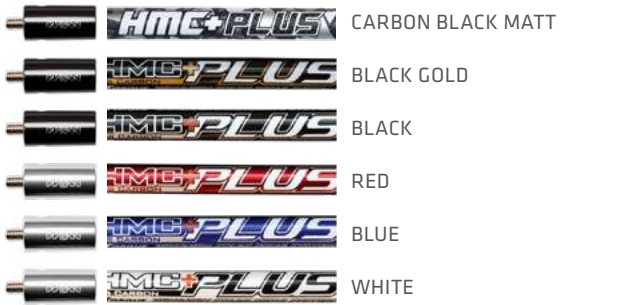


HMC PLUS

HMC PLUS stabilizer is a best-selling product over a long period of time at WIN AND WIN Co., Ltd. It is made of High Modulus carbon and the outside diameter is 18.5 mm straight (internal tapered) stabilizer, which can be used in all weather conditions regardless of the performance of men and women.



| | | |
|------------------|-------------------|-------------------|
| LONG ROD LENGTH | 26 inches (111 g) | 28 inches (116 g) |
| | 30 inches (122 g) | |
| SHORT ROD LENGTH | 10 inches (80 g) | 11 inches (84 g) |
| | 12 inches (89 g) | |
| EXTENDER LENGTH | 3 inches (50 g) | 4 inches (65 g) |
| | 5 inches (75 g) | 6 inches (80 g) |



2 INCHES EXTENDER

ACS-EL EXTENDER 2 INCHES

A stainless steel cap provides increased weight and strength to increase shooting feeling.

| | | | |
|--------|----------|--------|------|
| LENGTH | 2 inches | WEIGHT | 61 g |
|--------|----------|--------|------|

COLORS



UPPER STABILIZER

ACS-ST CARBON UPPER STABILIZER

The ACS-ST CARBON UPPER STABILIZER has an increased carbon content of the carbon tube to reduce the impact of shooting more effectively. A stainless steel cap provides increased weight and strength to increase shooting feeling.

| | |
|------------------------|--------------|
| LENGTH / WEIGHT | 120mm / 158g |
| BODY LENGTH / WEIGHT | 50mm / 60g |
| DAMPER LENGTH / WEIGHT | 38mm / 48g |
| WEIGHT LENGTH / WEIGHT | 32mm / 50g |
| THREAD SIZE | 5/16"-24 |



ACS-EL CARBON UPPER STABILIZER

The ACS-EL Carbon Upper Stabilizer's all-carbon core suppresses vibration and bow torque quickly at release along with a help of Multi Damper attached.

| | |
|------------------------|----------------|
| LENGTH / WEIGHT | 125mm / 168.5g |
| BODY LENGTH / WEIGHT | 55mm / 30.5g |
| DAMPER LENGTH / WEIGHT | 38mm / 48g |
| WEIGHT LENGTH / WEIGHT | 32mm / 90g |
| THREAD SIZE | 5/16"-24 |



ACS CARBON UPPER STABILIZER

Carbon bar, multi damper and aluminum body-well-balanced in three parts help efficient vibration and bow torque control.

| | |
|------------------------|----------------|
| LENGTH / WEIGHT | 125mm / 167.5g |
| BODY LENGTH / WEIGHT | 55mm / 29.5g |
| DAMPER LENGTH / WEIGHT | 38mm / 48g |
| WEIGHT LENGTH / WEIGHT | 32mm / 90g |
| THREAD SIZE | 5/16"-24 |



DAMPER



WIAWIS MAC DAMPER



WIAWIS MAC DAMPER is a product that combines materials and designs that help reduce shock and vibration compared to MULTI DAMPER. It is a damper for stabilizers and can be used as an up/down damper instead of upper stabilizer, or as a grip weight damper. Two half screws are included to expand the range of use.

| | | | |
|-------------------------------|----------------------|--------------------------------|-------------|
| LENGTH | 38 mm | WIDTH (WIDE/NARROW) | 38mm / 24mm |
| WEIGHT | 40 g | COLORS | BLACK |
| THREAD SIZE (Stabi Direction) | 5/16"-24 | THREAD SIZE (Weight Direction) | 1/4"-20 |
| SCREW SIZE | 1/4"-20 and 5/16"-24 | | |



WIAWIS ADT DAMPER



WIAWIS ADT DAMPER is a product that combines MAC DAMPER and WIAWIS DAMPER CUP. It is designed to simply suppress secondary vibrations that may occur by weights used in the damper.

The ADT DAMPER improves the rigidity of the damper the more you tighten the MAC DAMPER to the DAMPER CUP, which improves the shooting feel and vibration reduction.

Another advantage is that everyone can use it through intensity adjustment according to the weight balance regardless of the strength of the pound.

| | | | |
|-------------------------------|----------------------|--------------------------------|-------------|
| LENGTH | 60 mm | WIDTH (WIDE/NARROW) | 38mm / 24mm |
| WEIGHT | 70 g | COLORS | BLACK |
| THREAD SIZE (Stabi Direction) | 5/16"-24 | THREAD SIZE (Weight Direction) | 1/4"-20 |
| SCREW SIZE | 1/4"-20 and 5/16"-24 | | |



WIAWIS DAMPER CUP



WIAWIS DAMPER CUP is a product designed to be used not only with MAC DAMPER but also with MULTI DAMPER. It is a product that allows to adjust the strength of the damper according to the weights used.

It is also a product that can be used by users who use long upper stabilizers, grip weight dampers, or users who use the damper alone as an up damper.

| | | | |
|-------------------------------|----------|----------------------------|-------------|
| LENGTH | 40 mm | WIDTH (WIDE/NARROW) | 38mm / 24mm |
| WEIGHT | 30 g | COLORS | BLACK |
| THREAD SIZE (Stabi Direction) | 5/16"-24 | THREAD SIZE (Inside Screw) | 5/16"-24 |



WIAWIS MULTI DAMPER

WIAWIS MULTI damper is designed to reduce vibration quickly caused by shocks during shooting and to reduce secondary vibrations after shooting from special material and strength of the damper.

It is also designed to be used with various types of bows such as up, long and short stabilizer and weight control dampers under the grip by using the screws of 1/4-20 and 5/16-24. The damper is available not only for recurve bow but also for compound bow.

| | | | |
|--------|-------|--------|------|
| LENGTH | 38 mm | WEIGHT | 48 g |
| COLORS | BLACK | | |



ACS DAMPER

After much research and development by the Win&Win team on the shape and length of vibration waves with stabilizers, Win&Win has released their WIAWIS ACS Damper. The ACS Damper is far superior in absorbing vibration.

| | | | |
|-------------|---------|--------|-------|
| LENGTH | 50 mm | WEIGHT | 33 g |
| THREAD SIZE | 1/4"-20 | COLORS | BLACK |

BW&BW SHORT DAMPER

BW dampers are made from an absorbent rubber material that nearly eliminates vibration during shooting and controls poor movement in equipment after the shot.

| | | | |
|-------------|--------------|--------------------|-------|
| LENGTH | BWD : 40 mm | BWD SHORT : 25 mm | |
| WEIGHT | BWD : 45.5 g | BWD SHORT : 32.5 g | |
| THREAD SIZE | 1/4"-20 | COLORS | BLACK |



BW DAMPER



BW SHORT DAMPER



MATHEWS HARMONIC DAMPER



MATHEWS EHS HARMONIC DAMPER

MATHEWS HARMONIC DAMPER

| | | | |
|--------|------|--------|-------|
| WEIGHT | 10 g | COLORS | BLACK |
|--------|------|--------|-------|

MATHEWS EHS HARMONIC DAMPER

| | | | |
|--------|------|--------|-------|
| WEIGHT | 32 g | COLORS | BLACK |
|--------|------|--------|-------|

CAPS



META CAP

META CAP is a product designed to make the META DX, ATF-DX and META LX risers lighter when the user wants it.

You can remove either the assembled MATHEWS EHS HARMONIC DAMPERS or MATHEWS HARMONIC DAMPER on its own, or both if required. You can then replace them by inserting the META CAPs into the empty holes.

| | | | |
|--------|-----------|----------|----------|
| SIZE | 32 ø (mm) | COLORS | BLACK |
| WEIGHT | 9 g | MATERIAL | SILICONE |

WEIGHT

DISC COLOR WEIGHT

WIAWIS DISC COLOR weight products are made in three weights and four colors. It was designed to allow archers to set their own weight and color freely.

In order to apply both 1 / 4-20 and 5 / 16-24 threaded parts to the bows, Three types of screws are included below

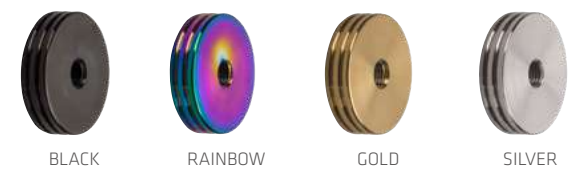
WEIGHT - 20 g / 40 g / 60 g

- *included screws
- | | | | |
|--------------|---------|---|--------|
| - 40mm screw | 5/16-24 |  | |
| - 23mm screw | 5/16-24 |  | 1/4-20 |
| - 20mm screw | 5/16-24 |  | |

WEIGHT



COLORS



COLOR WEIGHT

WEIGHT - Head 40 g / Flat 23 g



COLORS



LX WEIGHT

WEIGHT - Head 45 g / Flat 30 g / Bottom 45 g



WIN WEIGHT (HMC PLUS)

WEIGHT - Head 38 g / Flat 23 g



S21 WEIGHT 25g, 45g



WEIGHT - Head 25 g / Flat 25 g / Bottom 25 g WEIGHT - Head 45 g / Flat 25 g / Bottom 45 g

BOLT

TILLER ADJUSTMENT BOLT

All tiller bolts are 13mm diameter and are compatible with any type of WIAWIS risers.

COLOR ALUMINUM TILLER BOLT



COLOR STAINLESS STEEL TILLER BOLT



WIAWIS EZ TILLER BOLT



META DX, ATF-X STAINLESS STEEL TILLER BOLT



ATF-DX ALUMINUM TILLER BOLT



CXT STAINLESS TILLER BOLT



TFT-G ALUMINUM TILLER BOLT



LIMB BOLT

WEIGHT - 2g (*original stainless steel limb bolt weighs 6grams)

COLORS



V-BAR



WIAWIS CX-α V-BAR



The carbon V-bar effectively reduces vibration with impact resistance and improved durability and precision using graphene carbon.

| | |
|-------------------|----------------------------|
| 2 STRAIGHT ANGLES | 40 & 45 degrees |
| WEIGHT | 130 g |
| COLORS | Carbon Matt, Carbon Glossy |



WIAWIS CX-AD V-BAR

The adjustable carbon V-Bar allows the elevation angle of the short stabilizers by movement up and down. It is made from carbon fiber which makes it lighter than any other adjustable V-Bar. The vibration absorption properties are excellent which will enhance the archers concentration and feeling during shooting. It offers the adjustability to fix the short rods in any configuration possible to suit individual archer personal feeling requirements.

| | | | |
|--------|-------|--------|----------------------------|
| WEIGHT | 198 g | COLORS | Carbon Matt, Carbon Glossy |
|--------|-------|--------|----------------------------|



WIAWIS S21 V-BAR

Though most shock that occurs when shooting is absorbed by a stabilizer and V-Bar, some vibration returns to the riser and makes consistent accuracy difficult. WIAWIS S21 V-Bar is designed to absorb shock more efficiently, and increase shooting consistency by minimizing the vibration. Create your perfect stabilization system!

| | | | |
|--------|-------|--------|----------------------------|
| WEIGHT | 120 g | COLORS | Carbon Matt, Carbon Glossy |
|--------|-------|--------|----------------------------|

FOUR STRAIGHT ANGLES - 35, 40, 45 & 42 degrees

CUSHION PLUNGER

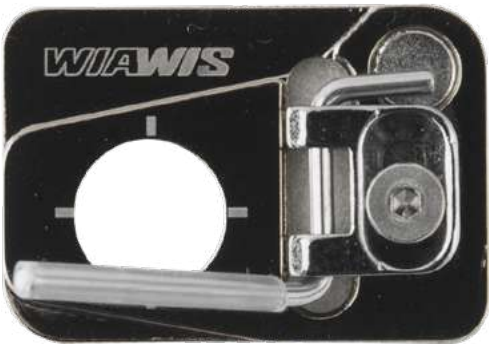


MIGHTY CUSHION PLUNGER

MIGHTY cushion plunger is designed to enhance the concentration in a optimized size, and the aluminum material offers luxurious finish and gentle button action.

| | | | |
|-------------------|--|--------|------------------------------------|
| MATERIAL | Stainless steel | WEIGHT | 43 g |
| THREAD SIZE | 5/16"-24 | COLORS | Black, Rainbow, Silver, Gold, Blue |
| ADJUSTABLE LENGTH | min 24.0 mm – max 29.0 mm (29 mm pressure point) min 17.5 mm – max 24.0 mm (24 mm pressure point) | | |

REST



SP ARROW REST

Can be attached to the riser with a cushion plunger, and is adjustable up and down depending on the thickness of the arrows. This rest combines the advantages of plastic and metal rests.

| | |
|--------|--|
| TYPE | RH / LH |
| COLORS | Black, Rainbow, Silver, Gold, Blue, Purple |



CLICKER



ARC CLICKER

In existing ACS clickers, we reinforced the blade to have an arch shape allowing an arrow to be placed in the clicker without using a finger.

| | | | |
|----------|------------------|----------|--------|
| SIZE | 6-32, 4-40 or M4 | | |
| STRENGTH | SOFT / HARD | MATERIAL | Carbon |



ACS CLICKER

The sleekly-shaped plate with a metal cap gives you a crystal-clear ‘click’ sound, with easier and more precise adjustment than before.

| | | | |
|----------|------------------|----------|--------|
| SIZE | 6-32, 4-40 or M4 | | |
| STRENGTH | SOFT / HARD | MATERIAL | Carbon |



COLOR CLICKER

As precisely machined stainless steel clicker, it provides accurate and stable timing when aiming. In addition, the tightening part of the clicker is ergonomically designed by allowing easy adjustment of the upper and lower and the front and the rear positions of the clicker by simple locking and loosening .

| | |
|-------------------|------------------------------|
| SIZE | 6-32, 4-40 or M4 |
| MATERIAL | Stainless steel |
| BLADE COLORS | Black, Rainbow, Gold, Silver |
| CAP, WHEEL COLORS | Black, White |

FINGER TAB



EZ FINGER TAB

The EZ finger tab is designed with an adjustable plate to perfectly fit your palm and allow for comfortable and natural hooking. The plate can be precisely adjusted to fit your hand by moving the plate in three planes : up and down, front and back, and diagonally. The small size of the tab takes away obstructions. The tab is made from reliable, high-quality genuine Cordovan leather.

| | |
|------|------------------------------|
| TYPE | RH / LH |
| SIZE | XSmall, Small, Medium, Large |

CORDOVAN LEATHER SOLD SEPARATELY

EZ R FINGER TAB

The round design of the EZ R Tab and unique sliding adjustments allow for comfortable thumb positioning and natural hooking. The unique plate positioning brings dynamic control over the WIAWIS EZ R finger tab. It is possible to control factors such as hand shape, the force being transmitted through the hand, and sensation of the shot. The plate that supports the little finger can be micro-adjusted and is also detachable. The tab is made from reliable, high-quality genuine Cordovan leather.

| | |
|------|------------------------------|
| TYPE | RH / LH |
| SIZE | XSmall, Small, Medium, Large |

CORDOVAN LEATHER SOLD SEPARATELY

360 CORDOVAN FINGER TAB

360 Cordovan finger tab has long been loved by many archers for many year. The 360 finger tab is designed using cordovan leather, exchangeable with archers' comfort in mind.

| | |
|------|------------------------------|
| TYPE | RH / LH |
| SIZE | XSmall, Small, Medium, Large |

CORDOVAN LEATHER SOLD SEPARATELY

GRIP

64



DX8 PLASTIC LOW GRIP

The standard grip equipped with META LX, ATF-DX. The inner design of the grip is different with other standard grips and only compatible with META LX, ATF-DX. The angle of this grip is low.



DX5 PLASTIC LOW GRIP

The compatible grip for META LX, ATF-DX. The inner design of the grip is different with other standard grips and only compatible with META-DX, ATF-DX. The angle of this grip is higher than the DX8. This grip has been produced to be narrow.



CTK5 PLASTIC LOW GRIP

This grip is suitable for archers who prefer to press the lower point of the grip. The part contacted by the palm is flat making the feeling of using the entire palm. The shape of grip enables archers who tend to press in a different way to press more precisely. The angle of this grip is lower than the No. 5 plastic grip.



No. 5 PLASTIC LOW GRIP

This grip is suitable for archers who prefer to press the lower point of the grip. The part contacted by the palm is more narrow than the No.4 wood making it difficult to the pressure point to be twisted. The angle of this grip is lower than the No. 4 plastic grip.



No. 4 WOOD LOW GRIP

This grip is suitable for archers who prefer to press the lower point of the grip. The part contacted by the palm is narrow making it difficult for the pressure point to be twisted. The angle of this grip is lower than the No. 4 plastic grip.



No. 4 PLASTIC LOW GRIP

This grip has a low angle and a narrow pivot point. It is suitable for the archers who want to press in the direction of the pivot point. The width of the grip is wider than standard allowing contact by the entire part of palm. This grip enables archers to feel more stable.



No. 7 PLASTIC STANDARD GRIP

The standard grip equipped for the WINGWIN WIAW-IS riser. This grip has a shape designed from the results of WINGWIN's research on various grip shapes and field tests by WIN Archers.



No. 1 PLASTIC STANDARD GRIP

The medium grip suitable for archers who prefer to press lower than the pivot point. This grip is slightly higher, and the width of the part contacted by the palm is more narrow than grip No. 5.



CTK2 WOOD STANDARD GRIP

This grip is made for pressing in the direction of the thumb to prevent the grip point from slipping outward. The part that is contacted by the palm is narrow making it difficult to twist at the point of pressure.



DX7 PLASTIC STANDARD GRIP

The compatible grip for META LX, ATF-DX. This grip has similar feeling and shape with the standard grip equipped with the WIAWIS riser. This grip has a shape designed from the results of WINGWIN's research on various grip shapes and field tests by WIN Archers.



No. 1 WOOD STANDARD GRIP

This grip is similar with grip No.1 where the pivot point and width of the part contacted by the palm is wider.



CTK3 WOOD STANDARD GRIP

This grip is made for pressing in the direction of the thumb to prevent the grip point from slipping outward. The width of the grip is wider than standard allowing contact by the entire part of palm. This grip enables archers to feel more stable.

65



CTK-H WOOD STANDARD GRIP

This grip enables archer to use the entire part of the palm. The shape of grip enables archers who tend to put pressure in a different directions to press more precisely.

No. 6 WOOD HIGH GRIP













This wood grip is suitable for archers who prefer to press the pivot point or lower point of the grip, and the entire surface is higher than the standard.



No. 6 PLASTIC HIGH GRIP

This plastic grip is suitable for archers who prefer to press the pivot point or lower point of the grip, and the entire surface is higher than the standard.

GRIP COMPATIBILITY

| | LOW | | | | STANDARD | | | | | | | | HIGH | | |
|--|---|---|---|---|---|---|---|---|---|---|--|---|------------------|-----------------|--------------|
| |  |  |  |  |  |  |  |  |  |  |  |  | | | |
| | Low Plastic | Low Plastic | Low Plastic | Low Plastic | Low Wood | Low Plastic | Standard Plastic | Standard Plastic | Standard Plastic | Standard Wood | Standard Wood | Standard Wood | Standard Wood | High Plastic | High WOOD |
| META LX, ATF-DX | ● | | | | | ○ | | ○ | | | | | | | |
| META DX, ATF-X, RADICAL-PRO, INNO CXT, CXT LITE CX7 , WINEX | | ○ | ○ | | ○ | ○ | ● | | ○ | ○ | ○ | ○ | ○ | ○ | ○ |

- ● = standard grip to be set in the factory / ○ = compatible
- Wooden grip in same group from 1 to 6 is marked 'high' on the basis of standard grip at the factory.

ACCESSORIE



FINNO CHEST GUARD

Ergonomically designed to sit securely and consistently on the shoulder and around the chest shot after shot, FINNO Chest Guard was designed by archers for archers!

| | |
|------|------------------------------|
| TYPE | RH / LH |
| SIZE | Small, Medium, Large, XLarge |

COLORS



AT-100 ARM GUARD

AT-100 Arm Guard has a skeleton-like structure with all the unnecessary parts cut out, making it extremely light and comfortable to wear. Its smooth outer surface creates less friction when impacted by the string.

COLORS





A-3 QUIVER

The total weight is dropped significantly and a cushioned belt provides a comfortable fit. Magnets at the bottom of the quiver make arrow carrying easy and multiple pockets allow you to carry all kinds of accessories.

| | |
|-----------|---------------------------------|
| TYPE | RH |
| BELT SIZE | Adjustable from 23 to 49 inches |



*THREE ARROW TUBES



CARBON BOW STAND

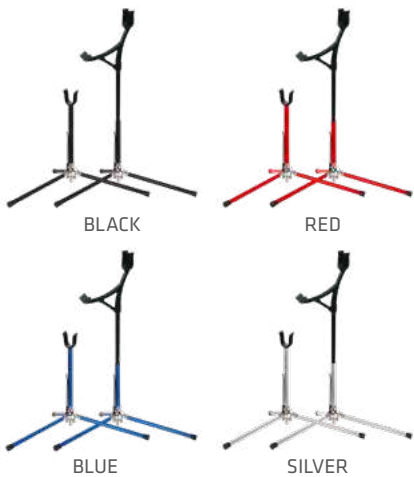
Unlike existing carbon bow stands, the string rest of the WIAWIS CARBON BOW STAND is designed to minimize any damage to the string, enhancing the durability of the stand. The string rest can be freely adjusted up and down to facilitate individual bow requirements. The head of the stand is designed to provide a sense of unity with the grip of the riser, and is made from a silicon material for more stable positioning.

Base fixing pins are provided in two different lengths to allow tailoring to the shooting field conditions. This give versatility to allow a solid/stable bow stand to protect your equipment.

TY MULTI BOW STAND

Suitable for indoor and outdoor use, the TY Multi Bow Stand is solidly built and a reliable bow support in all conditions. It is light yet strong and durable, its flip-lock legs fold up for easy storage and comes with two types of cradle head.

COLORS



Stable in any conditions with more firmly designed rest.



WIAWIS BOW CASE

The new case is made with PC and has been designed with enough space for all equipment. WIAWIS original arrow tube is included to transport arrows more comfortably. The Arrow tube can hold up to 24 arrows at a max length of 34" and a long stabilizer can be held in the center. Various sizes of pockets in the middle of the case are designed for storing small accessories. The top sides of the middle pocket are also foldable where magnetic clips are applied.

| | | | |
|--------|-------------------|----------|-------------|
| SIZE | 850x370x230 (mm) | CAPACITY | Approx 60 L |
| COLORS | Black, Sand Beige | | |



WIAWIS CASE BELT

It is made using a dial lock system to make the bow case safer for archers to use when they are on the move. This product can also be used in suitcases for travel.



WIAWIS BACKPACK



The outer material is made of parachute material which is very strong and not easily torn. Stability has been improved by using cushioning material to withstand impact. The interior is efficiently divided into spaces to store equipment, and cushion materials are applied for shock resistance, durability, and safety to store each product.

| | | | |
|--------|------------------|----------|-------------|
| SIZE | 320x190x720 (mm) | CAPACITY | Approx 36 L |
| COLORS | Black | | |



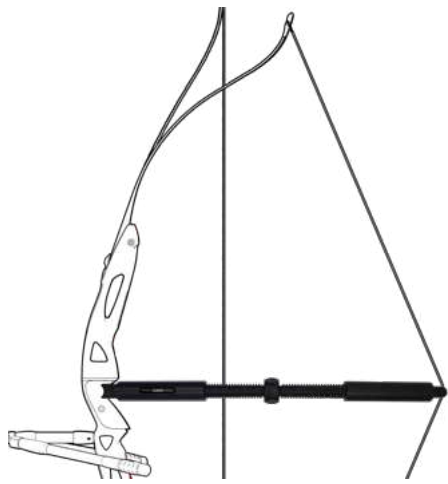
WIAWIS ARROW TUBE



The Arrow tube can hold up to 24 arrows at a max length of 34" and a long stabilizer can be held in the center.

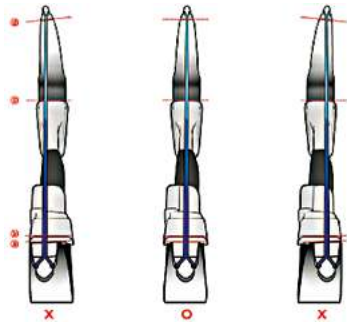


| | | | |
|----------|------------------------------|--------|-------------|
| SIZE | 85x85x630 (mm) | ARROWS | 24 to 37 in |
| DIAMETER | External 85mm, Internal 75mm | | |
| WEIGHT | 485 g | COLORS | Black |



Check the center-shot at set-up and full draw of the bow

TW-BRACE



The best way to check the alignment of the limbs along with your handle is when the bow is put at full draw. We have created the best tool to achieve it! The WIAWIS TW-BRACE allows a safe setup of your bow.

CAUTION :
Do not draw over 29"(marked red dot) or the TW-BRACE could collapse.



WIAWIS SPANNER WRENCH

This tool is designed to help effectively tighten or loosen the WIAWIS stabilizers. 5mm and 4mm Allen wrenches are included in this spanner, replacing your existing tools. Simply carry this one tool for all your stabilizer needs. WIAWIS SPANNER Wrench can also be used for non-WIN&WIN products as long as there is a hole in the end-cap of the stabilizer.



ARROW PULLER

The solid gripping surface on WIAWIS arrow puller makes retrieving arrows from the target safe and easy. It fits comfortably in the hand, includes a keyring for attachment to a belt or pack. Shaped like a cat!



SCAPOWER STRETCH BAND

Used as an exercise tool, the SCAPOWER Stretch Band will increase an archer's pulling weight, build up muscle and develop firmness in the shoulder. It can also be used to improve posture and technique. Daily practice is recommended : 10 minutes at a time with at least a 2 or 3 minute break. It does not take long to see improvement in shot placement, draw process and balance in the bow shoulder. Try it for yourself!



BALL STRETCH BAND

Used as an exercise tool, WIAWIS BALL Stretch Band will increase archer's strength & flexibility. The archer's posture and technique will be improved with this.

COLORS Black, Red, Blue, Yellow

T-BLOCK



SP T-BLOCK CARBON HANDLE TYPE



SP T-BLOCK ALUMINUM HANDLE TYPE



T-BLOCK CARBON HANDLE TYPE



T-BLOCK ALUMINUM HANDLE TYPE



CENTER ADJUSTMENT BOLT
CARBON HANDLE TYPE



CENTER ADJUSTMENT BOLT
ALUMINUM HANDLE TYPE



LOCKING BOLT

BLACK

SILVER



2025 APPAREL

T-SHIRT

CAP

UMBRELLA

ARM SLEEVE

SHOE COVER

TUMBLER

CHAIR

Quinty ROEFFEN (NETHERLANDS)

T-SHIRTS



2022 OFFICIAL ARCHER T-SHIRT

| | |
|-------|---------------------------------------|
| COLOR | PURPLE |
| SIZE | Small, Medium, Large, XLarge, XXLarge |



2022 OFFICIAL ARCHER T-SHIRT

| | |
|-------|---------------------------------------|
| COLOR | BLUE |
| SIZE | Small, Medium, Large, XLarge, XXLarge |



2016 OFFICIAL ARCHER T-SHIRT

| | |
|-------|---------------------------------------|
| COLOR | YELLOW |
| SIZE | Small, Medium, Large, XLarge, XXLarge |



2017 OFFICIAL ARCHER T-SHIRT

| | |
|-------|---------------------------------------|
| COLOR | PINK |
| SIZE | Small, Medium, Large, XLarge, XXLarge |



2015 OFFICIAL ARCHER T-SHIRT

| | |
|-------|---------------------------------------|
| COLOR | RED&BLUE |
| SIZE | Small, Medium, Large, XLarge, XXLarge |



2016 OFFICIAL ARCHER T-SHIRT

| | |
|-------|---------------------------------------|
| COLOR | SKY BLUE |
| SIZE | Small, Medium, Large, XLarge, XXLarge |



2017 OFFICIAL ARCHER T-SHIRT

| | |
|-------|---------------------------------------|
| COLOR | BLACK PINK |
| SIZE | Small, Medium, Large, XLarge, XXLarge |



2018 WIAWIS T-SHIRT

| | |
|-------|---------------------------------------|
| COLOR | BLACK, WHITE |
| SIZE | Small, Medium, Large, XLarge, XXLarge |

CAPS



CAP 8

COLOR WHITE



CAP 8

COLOR NAVY



BEANIE 1

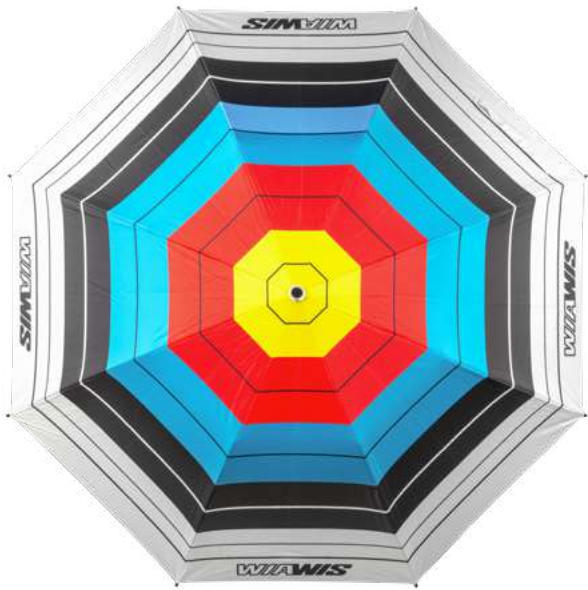
COLOR BLACK



BEANIE 2

COLOR NAVY

UMBRELLA



TARGET TELESCOPIC



LOGO TELESCOPIC



ETC



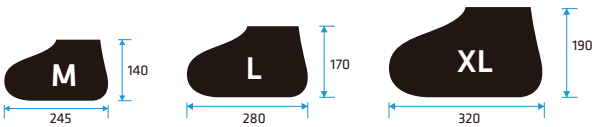
BLACK

WHITE

ARM SLEEVE



SHOE COVER



| RECOMMENDED | M | L | XL |
|-------------|-----------|-----------|-----------|
| SHOE SIZE | 210~245mm | 250~280mm | 280~320mm |
| COLOR | BLACK | | |



WIAWIS TUMBLER



| | |
|-------|------------------|
| SIZE | 750ml |
| COLOR | BLACK, BLUE GRAY |



WIAWIS CHAIR

| | |
|------|---------------|
| SIZE | 580x530x340mm |
|------|---------------|

TECHNOLOGY

WIN&WIN equipment is created by the best and checked by the best.



GRAPHENE NANO CARBON TECHNOLOGY

Graphene is an atomic-scale honeycomb lattice made of carbon atoms. Graphene thickness of 0.2 nanometers is over 200 times stronger than the strongest steel and has improved shock absorption qualities over CNT(Carbon Nano Tube). The material properties and structure provide excellent tensile strength and approximately double the impact strength over present foam materials. The use of this material in Archery products has been solely developed by WIN&WIN.



WIN&WIN CARBON TECHNOLOGY

High-tech engineering creates the best carbon material mixture for WIN&WIN bows, improving product quality and gaining athletes' confidence.



CARBON NANOTUBE TECHNOLOGY

Carbon nanotube and graphite nanofiber are true 21st century materials. They can be made as small as / 10,000th of a human hair, and have superior mechanical, chemical, physical and magnetic properties. Scientists believe nano-materials are the building blocks for the next generation of engineering.



WIN&WIN BOW TECHNOLOGY

Archery specialists and composite material professionals work together at our high-tech facilities to develop each WIN&WIN product. With the right balance of expertise and passion, they deliver the science of archery every single day.



WEIGHT BALANCE SYSTEM

The Weight Balance System is installed in the middle of the riser front end. It moves the center of gravity towards the front side, giving a more comfortable shooting feel and reducing unnecessary movement.



STRAIN BALANCE SYSTEM

A balance system concentrated on the top of the limbs distributes strain energy to the overall limb. It helps to minimize unnecessary limb movement and keeps your shooting smooth and stable.



THE SCIENCE OF SHOOTING FEELING

WIN&WIN products are designed with the archer in mind. Every innovative technology we use is part of the science of shooting feeling.



ABSORB VIBRATION SYSTEM

WIN&WIN's revolutionary new stabilization system specifically addresses the issue of vibration travelling back into the bow. The new ACS-EL stabiliser's unique design absorbs shock, improves dampening and controls torque during shooting.



HIGH TECH FOAM CARBON

Traditional limbs are coated in glass fiber to protect the carbon but it reduces arrow speed because it is so heavy. WIN&WIN uses a 45-degree carbon system that effectively protects the limb, increases shooting stability and reinforces against twisting.



3Ss: SPEED, STABILITY & SMOOTHNESS

Limbs are evaluated by three measurements : arrow speed, stability and smoothness. We research, design and develop all our bows based on these key factors. This makes sure that archers love each and every WIN&WIN product.



TORQUE FREE

Torque as the bow twists in an archer's grip when they release affects arrow flight directly, and will lessen accuracy. Reducing torque within the 0.03 seconds after an arrow is released dramatically improves consistency. WIN&WIN's TFS device absorbs shock and vibration on shooting, minimizes torque and increases accuracy.



CROSS CARBON LIMB TECHNOLOGY

A carbon fabric exclusively produced by WIN&WIN reinforces limbs against twisting and raises their elastic modulus. That means the limbs are stiffer, more stable and produce higher arrow speeds.



THE SCIENCE OF STRING FOLLOW-THROUGH

WIN&WIN engineers know that bow performance is measured on accuracy, stability, arrow speed and how smooth it feels at the moment it is shot. The last is the most important, and the string follow-through or string reaction on release is a major indicator of whether a bow feels good.



TOWER EFFECT

WIN&WIN's barrelled bottom (thicker and wider) design creates an innovative tower effect. This absorbs shock during the shot and increases accuracy by removing unnecessary movement in the bow.



EXTREME DURABILITY

WIN&WIN bows are made to a superior standard. During development each design must survive a 100,000-repetition durability test.



IDEAL GRIP

The WIN&WIN ideal grip is moulded to accept the joint of each finger, making drawing and aiming easier and minimizing torque during shooting.



CENTER SHOT ADJUSTMENT SYSTEM

With WIN&WIN's unique system, limb and riser alignment can be adjusted without unstringing the bow. We also designed a highly-specialized washer that prevents limb bolts from randomly coming loose.



ALUMINIUM FORGING TECHNOLOGY

Our hot forging system enhances the useful properties of all WIN&WIN aluminum products, like tensile strength and hardness.



T6 HEAT TREATMENT

T6 heat treatment raises the tensile strength and elastic modulus of WIN&WIN aluminum risers, making them resilient to intense shock.

Archer's CHOICE

Chosen by countless archers and medalists,
our products deliver the precision and performance trusted by champions.



LIM SIHYEON
KOREA



JEON HUNYOUNG
KOREA



KIM JE DEOK
KOREA



NAM SUHEON
KOREA



NODA SATSUKI
JAPAN



FEDERICO MUSOLESI
ITALY



LUCILLA BOARI
ITALY



SAITO FUMIYA
JAPAN



ARIF PANGESTU
INDONESIA



MEGAN HAVERS
GREAT BRITAIN



MORITZ WIESER
GERMANY



WANG DA PENG
CHINA



PATRICK HUSTON
GREAT BRITAIN



AN QI XUAN
CHINA



DHIRAJ BOMMADEVARA
INDIA



ALEN REMAR
CROATIA



LOUISA PIPER
GREAT BRITAIN



DENG YU-CHENG
CHINESE TAIPEI



CIJS BROEKSMA
NETHERLANDS



KHAIRUL ANUAR MOHAMAD
MALAYSIA



NICOLAS BERNARDI
FRANCE



OLEKSII HUNBIN
UKRAINE



MOLLY NUGENT
USA



MARCUS D'ALMEIDA
BRAZIL



JARNO DE SMEDT
BELGIUM



JEFF HENCKELS
LUXEMBOURG



ILFAT ABDULLIN
KAZAKHSTAN



RYAN TYACK
AUSTRALIA



LISA BARBELIN
FRANCE



BAPTISTE ADDIS
FRANCE



ANA LUIZA CAETANO
BRAZIL



LEI CHIEN-YING
CHINESE TAIPEI



DAN OLARU
MOLDOVA



KANG CHAE YOUNG
KOREA



CHIARA REBAGLIATI
ITALY



PENG CHIA-MAO
CHINESE TAIPEI



VIRGINIE CHÉNIER
CANADA



CAROLINE LOPEZ
FRANCE



AN SAN
KOREA



ANA MACHADO
BRAZIL



CHARLINE SCHWARZ
GERMANY



BHAJAN KAUR
INDIA



WEI CHUN HENG
CHINESE TAIPEI



QUINTY ROEFFEN
NETHERLANDS



UEHARA RUKA
JAPAN

#2025
#WIAWIS
#BORN TO WIN

KIM JE DEOK (KOREA)

WIAWIS PRODUCT LINE-UP 2025
Copyright 2025 WIAWIS Co., Ltd. all rights reserved.



WIAWIS

